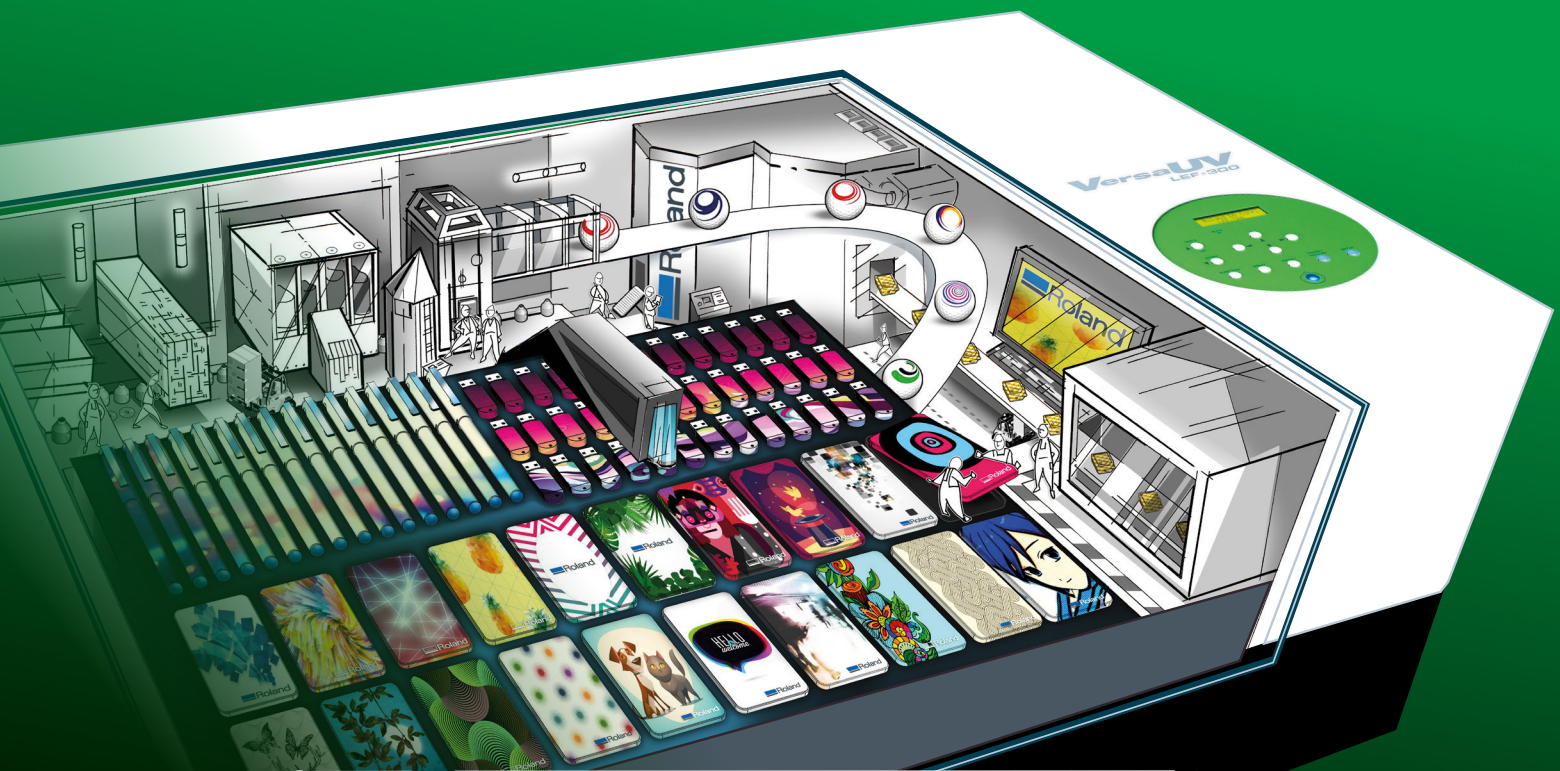


 Roland

# VersaUV

## LEF-300

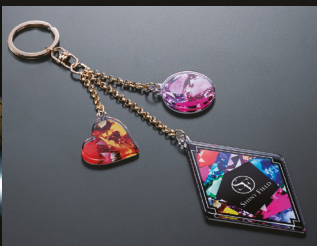


# IMAGE FACTORY

— PRODUCTIVE DIGITAL CUSTOMISATION —



CUSTOM CONTROL  
/DISPLAY PANELS



PERSONALISATION



LEATHER/ECO-LEATHER,  
WOOD ETC



CUSTOMISED ITEMS



TEXTURE EFFECTS  
AND EMBOSSING

## PRODUCTIVITY

### OPTIMISE YOUR WORKFLOW WITH A HOST OF PRODUCTIVITY FEATURES

The VersaUV LEF-300 has a large capacity print area of 770mm wide by 330mm long. With four print heads and two UV-LED lamps, the LEF-300 enables fast bi-directional direct printing on items up to 100mm in height and 8kg in weight. White and clear (gloss) inks are delivered through two channels each for faster printing, increased density in white and thicker layers of gloss.

### LEF-300 THROUGHPUT:

| CMYK                                | WHITE                               | CLEAR                                 |
|-------------------------------------|-------------------------------------|---------------------------------------|
| High Quality: 1.39m <sup>2</sup> /h | High Quality: 1.07m <sup>2</sup> /h | Gloss Varnish: 1.26m <sup>2</sup> /h  |
| Standard: 2.26m <sup>2</sup> /h     | Standard: 2.26m <sup>2</sup> /h     | Matte Varnish : 2.19m <sup>2</sup> /h |



### INCLUDES ADVANCED AND INTUITIVE ROLAND VERSAWORKS DUAL RIP SOFTWARE

Roland  
*VersaWorks Dual*  
RIP & PRINT MANAGEMENT SOFTWARE

Roland VersaWorks Dual RIP software includes all the advanced and ease-of-use features of VersaWorks and natively supports both PostScript and PDF files for improved file reproduction when layers and transparencies are used. New features such as Special Colour Plate Generation allows white or gloss data to be created from print artwork, simplifying the process. The Maintain Clipped Position function preserves the accurate repositioning of cropped images. This is useful when extra processes such as gloss effects are required on specific items.

## QUALITY

### ACHIEVE HIGH QUALITY PRINTING ON A WIDE RANGE OF MATERIALS AND OBJECTS

A vacuum table makes it easy to hold materials in place and the LEF-300 is able to accommodate items up to 100 mm in height. You can print on a huge variety of substrates such as acrylic, wood, board, plastic, fabric, leather and eco-leather. With a primer it is also possible to print on glass and metal. Directly print on to a wide range of items including pens, mobile phone cases, customised corporate merchandise, signs, personalised awards, giftware, industrial goods, product prototypes and more. The possibilities are virtually endless.

### ADVANCED ECO-UV INKS PRODUCE OUTSTANDING RESULTS

ECO-UV inks are available in 220cc or the more economical 500cc cartridges\*. Designed for flexibility, the ink conforms around complex corners and curves for decoration of a range of items. The LEF-300's CMYK, White and Clear (gloss) ECO-UV inks deliver premium quality output. A base layer of White ink allows clear or dark coloured materials to be printed. Clear ink produces gloss and matte finishes. Multiple layers of Clear ink can be applied to create simulated embossing and 3D textures and the included Roland Texture System Library has 72 ready-to-use texture patterns.

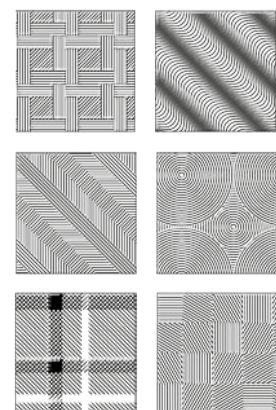
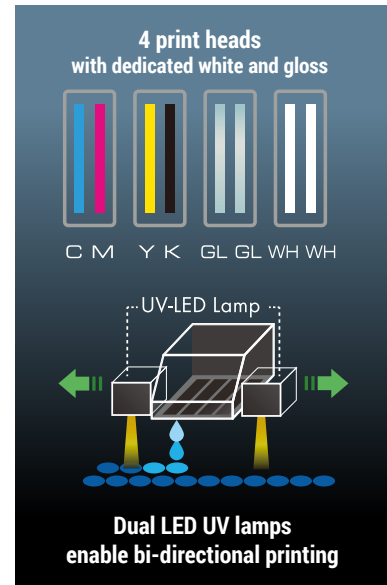
\*White ink only available in 220cc cartridges

### BUILT TO MEET HIGH VOLUME DEMANDS

In order to maintain accurate high-quality printing even during long production runs, the LEF-300 incorporates precision parts that minimise susceptibility to changes in temperature or humidity. To meet the needs of production site customers, the LEF-300 includes input/output connections that support external devices such as warning lights and automated jig replacement.

### FULL COVER ENSURES SAFETY AND PRINT QUALITY

The LEF-300 cover safeguards users by fully encasing moving parts. It prevents dust from entering the print area, while keeping the UV-LED light contained. Ink cartridges are located on the side of the device to allow replacement during operation without the need to open the cover. All ensuring that the device can be used in any busy print shop, industrial or retail environment.



Roland Texture System Library



# VersaUV LEF-300

Roland VersaWorks Dual  
FOR A PRINT MANAGEMENT SOFTWARE



| Specifications            |                   |   |
|---------------------------|-------------------|---|
| Printing technology       |                   | Piezoelectric inkjet  |
| Media                     | Dimensions        | Max. 800 (width) × 360 (length) × 100 (height) mm (31.5 × 14.2 × 3.94 in.)  |
|                           | Weight            | Max. 8 kg (18 lbs.)   |
| Printing width and length |                   | Max. 770 (width) × 330 (length) mm (30.3 × 13 in.)  |
| Ink cartridges            | Type and capacity | ECO-UV 220cc cartridge<br>ECO-UV 500cc cartridge (White ink is not available in 500cc cartridges.)  |
|                           | Colours           | 6 colours (cyan, magenta, yellow, black, white and gloss)   |
| Ink-curing unit           |                   | UV-LED lamp × 2   |
| Print resolution (dpi)    |                   | Max. 1,440 dpi  |
| Distance accuracy*        |                   | Error of less than ±0.3 mm (±11.8 mil) or ±0.3% of the specified distance, whichever is greater   |
| Repeat accuracy*          |                   | Error of less than ±0.2 mm (±7.9 mil) or ±0.1% of the specified distance, whichever is greater  |
| Connectivity              |                   | Ethernet (10BASE-T/100BASE-TX, automatic switching)   |
| Power-saving function     |                   | Automatic sleep feature   |
| Power requirements        |                   | AC 100 to 240 V ± 10%, 2.1 A, 50/60 Hz  |
| Power consumption         | During operation  | Approx. 178 W   |
|                           | Sleep mode        | Approx. 18 W  |
| Acoustic noise level      | During operation  | 60 dB (A) or less   |
|                           | During standby    | 49 dB (A) or less   |
| Dimensions                |                   | 1,560 (width) × 955 (depth) × 576 (height) mm (61.4 × 37.6 × 22.7 in.),<br>[ When the ink-cartridge tray is attached; 1,866 × 955 × 576 mm (73.5 × 37.6 × 22.7 in.) ] |
| Weight                    |                   | 144 kg (317.5 lbs.)   |
| Environment               | Power on          | Temperature: 20 to 32°C (68 to 90°F) (22°C [72°F] or higher recommended),<br>Humidity: 35 to 80% RH (non-condensing)  |
|                           | Power off         | Temperature: 5 to 40°C (41 to 104°F),<br>Humidity: 20 to 80% RH (non-condensing)  |
| Included items            |                   | Roland VersaWorks Dual RIP & PRINT MANAGEMENT SOFTWARE,<br>User's Manual, Pad trays, Power cable etc  |

\* Temperature: 23°C (73°F), humidity: 50%

| Options         |       |  |
|-----------------|-------|--|
|                 |       | Model  |
| ECO-UV EUV4 Ink | 220cc | EUV4-CY (Cyan), EUV4-MG (Magenta),<br>EUV4-YE (Yellow), EUV4-BK (Black),<br>EUV4-GL (Gloss), EUV4-WH (White) |
|                 | 500cc | EUV4-5CY (Cyan), EUV4-5MG (Magenta),<br>EUV4-5YE (Yellow), EUV4-5BK (Black),<br>EUV4-5GL (Gloss)             |
| Cleaning liquid | 220cc | SL-CL  |

\* White ink is not available in 500cc cartridges.

| Roland VersaWorks Dual System Requirements |   |
|--|---|
| Operating system                           | Windows® 10 (32/64-bit)<br>Windows® 8/8.1 (32/64-bit)<br>Windows® 7 Professional / Ultimate (32/64-bit) |
| CPU  | Intel® Core™2 Duo, 2.0 GHz or faster recommended  |
| RAM  | 2 GB or more recommended  |
| Video card and monitor                     | A resolution of 1,280 × 1,024px or more recommended   |
| Free hard-disk space                       | 40 GB or more recommended   |
| Hard-disk file system                      | NTFS format   |
| Optical drive                              | DVD-ROM drive   |

\* Roland VersaWorks Dual is a 32-bit application, which runs on 64-bit Windows® with WoW64 (Windows 32-bit on Windows 64-bit).

| Optional Air Filtration System   |   |
|--|---|
|  | <p>An optional Air Filtration System is available for the VersaUV LEF-300.</p> <p>This includes an activated carbon filter, ink storage facility and automatic on / off functionality. This unit can be placed easily underneath the LEF-300.</p> |



Vaporised components may slightly irritate the eyes, nose and/or throat during and following printing with this product. If continuously printing in a closed space, the density of volatile compositions will accumulate and may irritate the eyes, nose and/or throat. Roland DG strongly recommends that you install a ventilation system and use this product in a well-ventilated room. For more information, please contact your local distributor or dealer.

### About White Ink

Due to the nature of white ink, the pigment may settle in the cartridge and ink flow system, requiring you to shake the cartridge before each use.

Roland DG reserves the right to make changes in specifications, materials or accessories without notice. Actual output may vary. For optimum output quality, periodic maintenance to critical components may be required. Please contact your Roland DG dealer for details. No guarantee or warranty is implied other than expressly stated. Roland DG shall not be liable for any incidental or consequential damages, whether foreseeable or not, caused by defects in such products. PANTONE® is the property of Pantone LLC. All other trademarks are the property of their respective owners. Reproduction or use of copyrighted material is governed by local, national, and international laws. Customers are responsible for observing all applicable laws and are liable for any infringement. Roland DG Corporation has licensed the MMP technology from the TPL Group.



Roland DG (UK) Ltd  
 Griffin House  
 Windmill Road  
 Clevedon  
 North Somerset  
 BS21 6UJ

Tel | 01275 335 540  
 Fax | 01275 335 541

[www.rolanddg.co.uk](http://www.rolanddg.co.uk)