

**OKI**<sup>®</sup>

ColorPainter™ H3-104s

**Optimum Performance**  
**Superior Quality**  
**Industrial Strength**



**ColorPainter H3-104s Printer from OKI**

# Balancing class-leading speed with incredibly rich color output for standout performance of professional graphics.



ColorPainter H3-104s

The widest inkjet printer in the ColorPainter product line, the H3-104s is **engineered with laser-fast print speed and rugged durability for standout performance** in mid-range, high-volume environments. Designed with innovative features that streamline operation, boost productivity and simplify operator input, it delivers exceptional ROI.

ColorPainter H3-104s is the go-to solution for outdoor graphics applications that demand a wide-format printer with premium image quality and reliability. It is the ideal print solution for banners, fleet graphics, canvas, flex face and more.

- OPTIMUM PERFORMANCE
- INNOVATIVE PRINT TECHNOLOGIES
- SUPERIOR QUALITY
- INDUSTRIAL STRENGTH

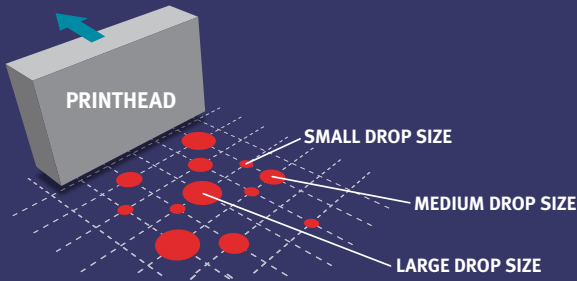


# Innovative Print Technologies

## DYNAMIC DOT PRINTING



Dynamic Dot Printing Technology controls and optimizes dot size and density for each print mode which accentuates fine details and delivers rich, bold and glossy colors without loss in speed. It produces good density and less graininess even at low resolution.

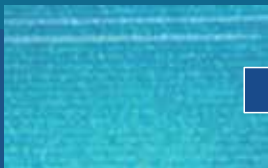


## SMART NOZZLE MAPPING<sup>2</sup>

OKI's advanced nozzle compensation technology automatically re-maps clogged nozzles so you can continue to print with perfect image quality, significantly reducing downtime and boosting productivity.



PRINT WITH CLOGGED NOZZLES



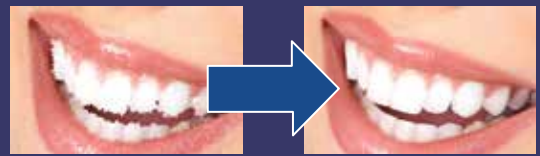
PRINT AFTER USING SNM



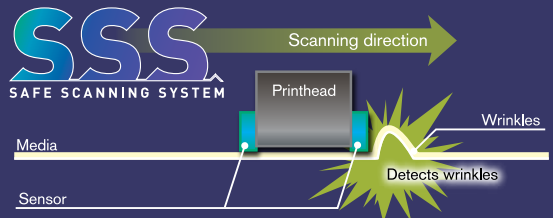
SNM COMPENSATES FOR CLOGGED NOZZLES

## SMART PASS

Eliminates banding, reduces graininess in halftone areas and produces smooth skin tone images for exceptional print quality at high speeds, on various media.



SP4 SIGNIFICANTLY REDUCES GRAININESS IN HALFTONE AREAS AND PRODUCES SMOOTH SKIN TONES.



## SSS – SAFE SCANNING SYSTEM

This sensing system detects when there is contact between the printheads and the media, allowing the operator to make adjustments during the print run without canceling it, helping reduce ink and media waste, while improving efficiency and productivity.



# Superior Quality

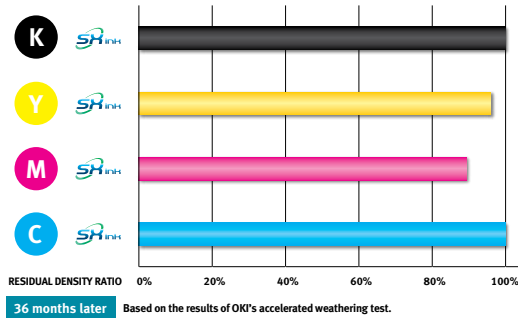
## ADVANCED SX INK



Low-odor, eco-solvent SX inks offer a wide color gamut and vivid color saturation for the world's glossiest, richest print images—and with low odor for a cleaner, healthier workplace environment.

### Superior Indoor & Outdoor Durability

Stay consistent up to 36 months outdoors, unlike competitive inks that fade significantly after a couple months. Includes a 3M™ MCS™ Warranty for outdoor graphics and Greenguard GOLD certification for safety of indoor applications.



### Low Ink Cost

SX inks carry a high pigment load, which significantly reduces ink usage and running costs, saving owners thousands of dollars in ink costs each year.

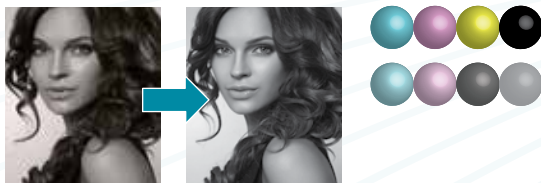
### High Density Printing

SX inks achieve high-density color and details in dark areas—at an industry-best print speed—ideal for printing sharp, clear and bright backlit signs.



### True Monochrome Printing

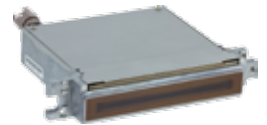
ColorPainter H3-104s offers 8-color printing including gray and light gray inks that are capable of showing real gradation, light shadows and metallic texture.



# Optimum Performance

## HIGH SPEED PIEZO PRINTHEADS

Industrial high-frequency printheads are engineered for ultra-fast printing speeds up to 609 sq. ft. per hour and longer wear time, which reduces waste and saves on replacements costs.



Max Speed (1)	609 sfph/4-pass (56.6 smph)
Max Speed (2)	406 sfph/6-pass (37.7 smph)
High Speed	270 sfph/6-pass (25.1 smph)
Normal	189 sfph/9-pass (17.6 smph)
High Quality	105 sfph/12-pass (9.8 smph)
Max Quality	65 sfph/15-pass (6.0 smph)

Print speed based on printing 104-inch media.

## LARGE CAPACITY 1.5-LITER INK BAGS AND SUB TANKS

Large 1.5-liter capacity ink bags and built-in sub tanks allow operators to easily replace ink without interrupting print jobs.







# Industrial Strength



## **AUTOMATIC PRINT ADJUSTMENT**

Optical sensors automatically perform both media advance and bi-directional position adjustment, ensuring high-quality printing even for first time users.



## **MESH PRINTING KIT<sup>3</sup>**

Optional mesh print ink tray enables printing on mesh banner without using a liner.

## **DOUBLE-SIDED PRINTING SUPPORT<sup>4</sup>**

Operators can easily align double-sided prints using the alignment line which is printed on each side.



## **CP MANAGER CONTROLLER SOFTWARE**

Developed specifically for ColorPainter printers, CP Manager allows users to operate the printer from a PC, as well as communicate with the printer via email and Twitter<sup>1</sup>.



## **ROBUST FEED & TAKE-UP**

The industrial media feed and take-up system support reliable unattended printing of heavy-duty media rolls.



ColorPainter H3-104s	
Printhead	High-frequency drop-on-demand Piezo (8)
Number of Nozzles	508 nozzles/head
Max Resolution (true dpi)	900 x 900
Maximum Media Width	2,642 mm (104")
Maximum Print Width	2,632 mm (103.6")
Printing Speed	3.8 smph (41 sfph) to 56.6 smph (609 sfph)
Media Weight	Up to 120 kg (264 lbs)
Maximum Media Diameter	350 mm (13.8")
Margin Size	5 mm (1/5") on each edge (with rolled media, without edge guards)
Maximum Print Length	PVC 100 m (328'), other media 50 m (164') (Print data size depends on RIP)
Head Height	Automatic adjustment
Ink Type	SX or 3M™ SX Eco-Solvent, Low-Odor
Color	8 (C, M, Y, K, Lc, Lm, Gy, Lgy)
Maximum Ink Capacity	1.5 liters per color
Media	PVC, banner and other media designed for solvent inks
Heater	3-way built-in heaters (Pre, Print, After) Max temp 158°F (70°C)
Take-up Modes	Loose/Inner, Loose/Outer, Tension/Inner, Tension/Outer
Interface	USB 2.0
Power Source	200 to 240 VAC, ±20%
Power Consumption (Printer)	1,440 W or less
Power Consumption (Heater)	2,880 W or less
Operating Environment	15 - 30°C (59 - 86°F), 30 - 70% RH (no condensation)
Storage Environment	5 - 35°C (41 - 95°F), 10 - 80% RH (no condensation)
External Dimensions	4,126 (W) x 1,366 (D) x 1,513 (H) mm (162" x 54" x 60")
Weight	600 kg (1,322 lbs) or less without media and inks

Ink –1.5 liter
SX or 3M SX Ink Yellow
SX or 3M SX Ink Magenta
SX or 3M SX Ink Cyan
SX or 3M SX Ink Black
SX or 3M SX Ink Light Cyan
SX or 3M SX Ink Light Magenta
SX or 3M SX Ink Gray
SX or 3M SX Ink Light Gray

Accessories
Mesh Kit 104
Exhaust Attachment
Foot Switch
Scroller
Tensioner 104
Offset Loading Kit 104

**Warranty & Support**

ColorPainter H3-104s carries a 3-year warranty that includes the entire printer and printheads. All sales and support for ColorPainter printers are provided by technically trained and certified authorized distributors.

RIP: Most industry RIPs support ColorPainter printers. Consult with your authorized distributor to identify the best RIP for your needs.

**OKI DATA AMERICAS, INC.**

**HEADQUARTERS**  
 2000 BISHOPS GATE BOULEVARD  
 MOUNT LAUREL, NJ 08054-4620  
 TEL: 800.OKI.DATA (800.654.3282) | FAX: 856.222.5320

**WIDE FORMAT DIVISION**  
 2067 WINERIDGE PLACE, SUITE C  
 ESCONDIDO, CA 92029  
 TEL: 800.264.1272

**MIDWEST**  
 8505 FREEPORT PARKWAY, SUITE 600  
 IRVING, TX 75063

**CANADA**  
 5800 HURONTARIO STREET, SUITE 1020  
 MISSISSAUGA, ON L5R 4B9  
 TEL: 905.608.5000 | FAX: 905.608.5040

WWW.OKIDATA.COM | COLORPAINTERINFO@OKIDATA.COM | 800-264-1272



- 1 Twitter is a trademark of Twitter, Inc.
- 2 This function does not guarantee image quality improvement under any print conditions.
- 3 Expected image quality not guaranteed due to the slight individual difference among the printers and media. Be sure to perform test print beforehand. OKI Data Infotech does not guarantee all mesh banners are printable with the printer.
- 4 Alignment of double-sided printing may be affected by media settings and media advance adjustment. Double-sided print can't be used with permeable media like flexible face materials.