

UJV55



Mimaki UJV55-320 UV Printer

Super wide format UV-LED inkjet printer



UJV55 features-at-a-glance

- Super wide or dual-roll capacity
 - OR • One 129.7-inch wide roll
 - Two rolls up to 60-inches each
- Mimaki Proofing Panel (MPP) for instant print quality checks
- High productivity of up to 1184 sqft/hr.
- Gigabit ethernet connectivity
- Outdoor durability with Mimaki original LUS-120 inks

ADVANCED PRINTING TECHNOLOGY

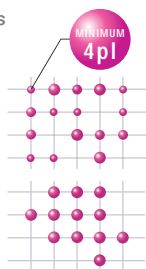
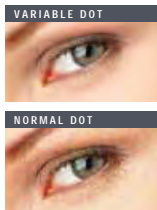
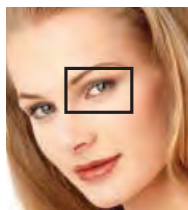
Mimaki Advanced Pass System 4 (MAPS4) technology reduces the appearance of banding.

MAPS4 applies ink in gradations over several passes using a blending mask pattern. This unique imaging technology facilitates higher speed bi-directional printing by reducing banding created by uneven ink drying.

Smooth, high definition color with variable dot printing.

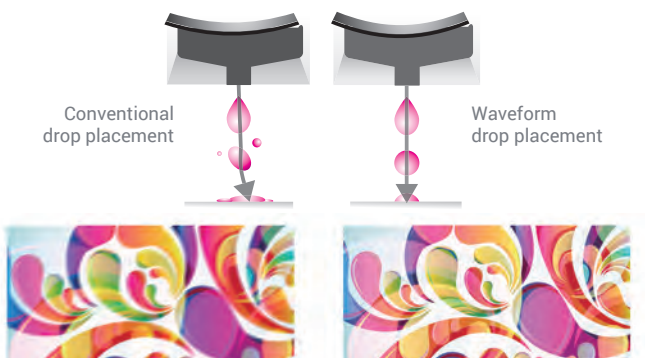
Variable dot printing produces a smoother, more natural gradation without the granular appearance seen in fixed-dot printing.

Variable dot sizes at a minimum of 4pl offers higher definition over standard dots.



Superior inkjet technology provides precise, consistent high quality imaging.

Mimaki's proprietary Waveform inkjet technology controls the shape of the ink drop to an almost perfect sphere for precise placement. This results in sharper lines, text and image edges even at high speeds.



INK FLEXIBILITY

High performance UV-LED ink.

Mimaki-developed and manufactured LUS-120 UV-LED inks offer excellent scratch resistance and provides up to 170% flexibility for more application versatility. These fast-curing inks are an excellent choice for high-performance UV-LED printing.



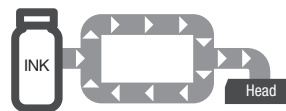
External bulk ink for extended printing.

The external 3-liter bulk ink system enables long, unattended print runs. Inks can be replenished without stopping the printer. A gravity method detects ink levels, indicated by LEDs on the ink system's front panel.

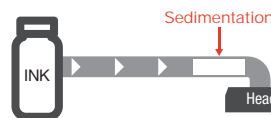
TECHNOLOGIES FOR PRODUCTIVITY

MCT keeps white ink circulating.

Dependable white ink performance.



White ink can settle and clog the print head nozzle.

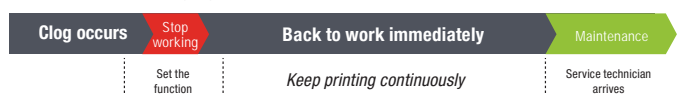


When printing with white ink, the innovative Mimaki Circulation Technology (MCT) keeps the ink in constant, fluid circulation between the cartridge and print head. This ensures stable, consistent white ink imaging and reduces white ink and media waste.

Real-time reliability.

The UJV500 printer is equipped with Mimaki's Nozzle Check Unit (NCU) that automatically detects and cleans clogged nozzles while the machine is printing. The Nozzle Recovery System (NRS) takes over if for any reason the nozzle fails to clear and the printer experiences nozzle drop out. Rather than stopping, the printing operation can continue by registering with NRS that a particular nozzle has experienced a drop out.

With Nozzle Recovery System



Without Nozzle Recovery System



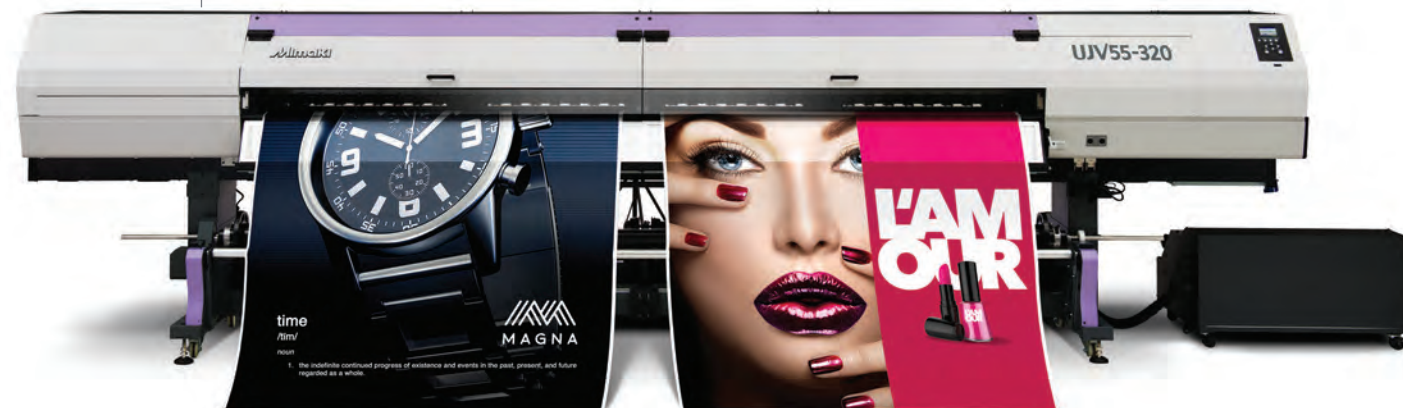
Super wide UV-LED printing

The UJV55-320 super wide format UV-LED printer is a roll-to-roll model featuring seven ink colors including white for printing on transparent or colored media. It can print on one super wide roll of media for oversized graphics and panels, or onto two rolls simultaneously. This new model produces vibrant colors with a high degree of opacity and consistent color for optimal viewing results in day/night applications. It features an in-line LED panel for checking image quality during printing.



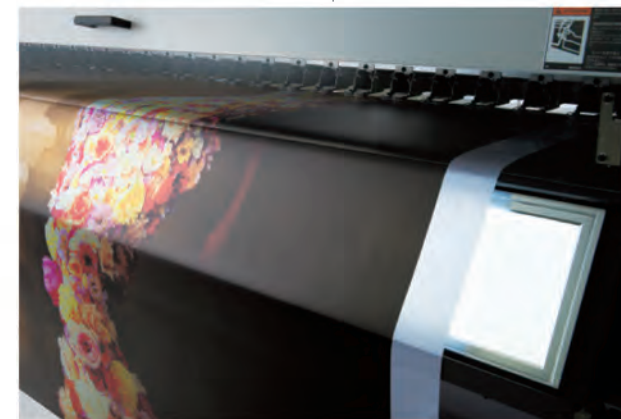
BULK INK SYSTEM

Large, three-liter ink tanks are installed in an external ink supply unit so you can replenish the ink while printing, without having to stop the printer.



SUPER WIDE OR DUAL-ROLL CAPACITY

The UJV55-320 printer supports media up to 127.9 inches wide for oversized graphics and panels. It can also print simultaneously onto two rolls up to 60-inch wide each. This dual-roll capability can double the productivity of your shop, with both rolls printing the same set of graphics, or completely different jobs.



MIMAKI PROOFING PANEL (MPP) FOR INSTANT PRINT QUALITY CHECKS

An LED backlit-proofing panel gives you the ability to check the color fidelity during printing and react immediately to a misprint, which can help reduce waste and improve production efficiency. This feature is particularly useful for checking backlit prints. With a quick visual check, you can easily assess the print quality under similar conditions used for backlit signage.



WHITE INK FOR STUNNING BACKLITS

White ink enables three-layer printing with color + white + color, ensuring color fidelity for backlit and double-sided signs during both day and night.



WINDOW GRAPHICS



LARGE POSTERS

For applications as big as ideas

The UJV55 gives you the ability to produce oversized graphics to create giant posters, point-of-purchase displays, window graphics, exhibition graphics, banners and more. It is ideal for creating backlit or day/night signage that is popular in airports, transit stations and commercial facilities. Mimaki original LUS-120 inks provide up to 170% flexibility, so you can print even on soft media such as banner materials while offering excellent scratch resistance for high-traffic applications.



EXHIBITION BANNERS



BACKLIT LIGHT BOX

RasterLink 6

Intuitive and user-friendly operation



SOPHISTICATED RIP SOFTWARE MAXIMIZES PERFORMANCE

Simplified RIP operations.

The “Register as Favorite” feature saves regularly used RIP layouts and operations in a single window for quick retrieval.

Web software update function.

Program updates and profiles can be downloaded via the Mimaki website.

UJV55-320 SERIES SPECIFICATIONS | INKS

Item		Specifications	
Print Head		On-demand piezo head (4 staggered print heads)	
Print Speeds (4 color mode)		Draft (2-pass): 1184 SqFt (110 SqM) / Hr. Standard (6-pass): 430 SqFt (40 SqM) / Hr. High Quality (12-pass): 215 SqFt (20 SqM) / Hr.	
Print Resolution		300, 600, 900, 1200 dpi	
Ink	Type	UV LED: LUS-120 (C, M, Y, K, Lc, Lm, W)	
	Ink Supply System	1 L bottle	
Maximum Print Width		126 in. (3,200 mm)	106.3 in. when printing with 1200 x 1200 dpi mode
Media	Maximum Width	Single roll: 128 in. (3,250 mm)	Dual rolls: 60 in. (210 mm) x 2
	Roll Weight	Large shaft: 220.5 lbs or less	Roll holders: 39.7 lb. or less
	Roll Diameter	Large shaft: 9.8 in. or less	Roll holders: 7 in. or less
	Thickness	1.0 mm or less	
Media Take-Up Device		Roll take-up device	
Interface		USB2.0, Ethernet 1000BASE-T	
Power Specification		AC 200~240V±10%, 50/60 Hz±1 Hz, 18 A or less	
Power Consumption		4.3 kW or less	
Operational Environment		Temperature: 68°F - 86°F	
		Humidity: 35% - 65% Rh (non-condensing)	
Dimensions (WxDxH)		213 in. x 39.2 in. x 56.7 in	
Weight		2006 lb. (includes weight of ink supply unit)	

Item	Color	1L Bottle
LUS-120 UV ink	Cyan	I-LUS12-C-BA
	Magenta	I-LUS12-M-BA
	Yellow	I-LUS12-Y-BA
	Black	I-LUS12-K-BA
	Light Cyan	I-LUS12-LC-BA
	Light Magenta	I-LUS12-LM-BA
	White	I-LUS12-W-BA



Print speeds are based on factory tests. Total throughput depends upon front-end driver/RIP, file size, printing resolution, ink coverage, network speed, etc. For best performance, always use Mimaki original inks. Specifications subject to change without notice.

Some of the samples in this brochure are artificial renderings. Specifications, design and dimensions stated may be subject to change without notice (for technical improvements, etc.)

The corporate names and merchandise names written in this brochure are the trademarks or registered trademarks of their respective companies.

Inkjet printers print using extremely fine dots, so colors may vary slightly after replacement of the printing heads. Also note that if using multiple printer units, colors could vary slightly from one unit to another due to slight individual differences.



mimakiusa.com

Mimaki USA, Inc. | 150-A Satellite Blvd. Suwanee, GA 30024 | 888-530-4021 | info@mimakiusa.com

© 2016 Mimaki USA, Inc. All rights reserved. Ver. 1.0