

UJV500



Mimaki UJV500-160 UV Printer

64" roll-to-roll, energy saving UV-LED printer
featuring the 3M™ MCS™ Warranty



UJV500 features-at-a-glance

- High speed, roll media UV-LED printer
- Utilizes 2 types of UV ink: High speed LUS-150 and highly durable, flexible LUS-200
- Print resolutions up to 1200 dpi
- Print speeds up to 645 sqft/hr
- Available in 64-inch media width

THE LATEST UV-LED PRINTER TECHNOLOGY

High speed, staggered print head configuration.

An efficient staggered print head array creates a wider imaging swath that facilitates high speed production even when using white ink.

4-color ink set C M Y K

High Speed	300×450HQ 12P Bi/Normal	645 ft ² /h
Standard	600×900dpi 24P Bi/Hi	323 ft ² /h
High Quality	1200×1200dpi 32P Bi/Hi	129 ft ² /h

4-color + White ink set C M Y K W

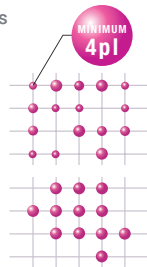
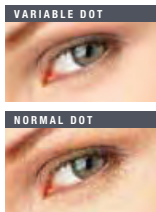
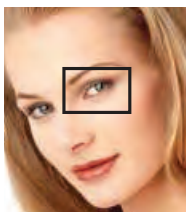
High Speed	300×450HQ 12P Bi/Normal	White	323 ft ² /h
		2Layer	161 ft ² /h
		3Layer	107 ft ² /h
Standard	600×900dpi 24P Bi/Hi	White	161 ft ² /h
		2Layer	81 ft ² /h
		3Layer	54 ft ² /h
High Quality	1200×1200dpi 32P Bi/Hi	White	65 ft ² /h
		2Layer	32 ft ² /h
		3Layer	22 ft ² /h

The print speeds above are the results of printing on media with a 63-in width.

Smooth, high definition color with variable dot printing.

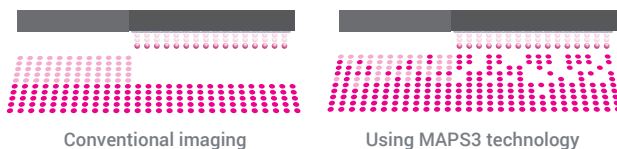
Variable dot printing produces a smoother, more natural gradation without the granular appearance seen in fixed-dot printing.

Variable dot sizes at a minimum of 4pl offers higher definition over standard dots.



MAPS3 technology reduces the appearance of banding.

MAPS3 (Mimaki Advanced Pass System 3) prints passes in a gradation-like method by dispersing ink drops between passes. This unique imaging technology reduces banding, uneven ink drying and bi-directional stripes.



INK VERSATILITY

UV ink sets: two choices available.

Outdoor durable, 200% flexible LUS-200 UV ink is available in CMYK and backed by the 3M™ MCS™ Warranty when using specified 3M media.



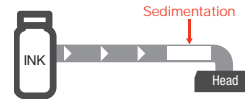
High-speed LUS-150 UV ink is specially formulated for quick curing and reduced tackiness. This ink is flexible up to 150% for reduced cracking. White ink is available for transparent and colored media.



AUTOMATED QUALITY ASSURANCE



White ink can settle and clog the print head nozzle.



MCT keeps white ink circulating.

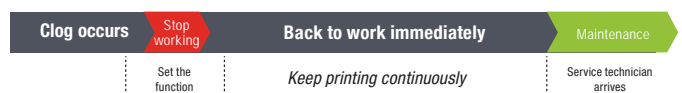
Dependable white ink performance.

When printing with white ink, the innovative Mimaki Circulation Technology (MCT) keeps the ink in constant, fluid circulation between the cartridge and print head. This ensures stable, consistent white ink imaging and reduces white ink and media waste.

Real-time reliability.

The UJV500 printer is equipped with Mimaki's Nozzle Check Unit (NCU) that automatically detects and cleans clogged nozzles while the machine is printing. The Nozzle Recovery System (NRS) takes over if for any reason the nozzle fails to clear and the printer experiences nozzle drop out. Rather than stopping, the printing operation can continue by registering with NRS that a particular nozzle has experienced a drop out.

With Nozzle Recovery System



Without Nozzle Recovery System



Indoor or outdoor guaranteed.

With the **Mimaki UJV500-160** UV roll-based printer, you can produce a nearly unlimited range of visual communications for indoor or outdoor use. From floor to fleet graphics, the 64-inch wide UJV500-160 printer delivers crisp, vivid images while using energy-saving LED technology. Get guaranteed outdoor durability with the 3M™ MCS™ Warranty*, widely recognized as the best in the industry. Mimaki LUS-200 inks can also stretch up to 200%, making them ideal for curved surfaces. White ink is also available for producing backlights and day/night panels, or printing onto colored substrates.



EFFICIENT UV-LED CURING
The high-speed UV curing unit brings all of the advantages of LED technology to the UJV500 printer, such as long life, energy savings, and lower heat generation. This enables printing on media that is easily deformed or discolored by heat.



ECONOMICAL BULK INK STATION
UV cured printing is an ecological printing method that emits virtually no VOCs. The UJV500 printer utilizes Mimaki's economical ink station that hold two liters of UV ink for each of the 8 ink reservoirs. This bulk ink station reduces waste and running costs.



GUARANTEED DURABILITY
When using LUS-200 ink on media specified by 3M and installed properly according to 3M's instructions, the print quality and outdoor durability is guaranteed for the 3M™ MCS™ Warranty* period.
*For further details, reference 3M's guide "Certificate of 3M™ MCS™ Warranty Program."



STABILIZING MEDIA FEED & TAKE-UP
Continuous tension is required for accurate high speed printing. The media feed and take-up system provides stable material transport, and is positioned for easy access at the front of the printer.



MAPS3 BRINGS IMAGES TO LIFE
The unique imaging technology of the MAPS3 (Mimaki Advanced Pass System 3) practically eliminates banding at higher speeds by employing a proprietary dot randomized pattern throughout the pass modes.





FLEET GRAPHICS

Production friendly.

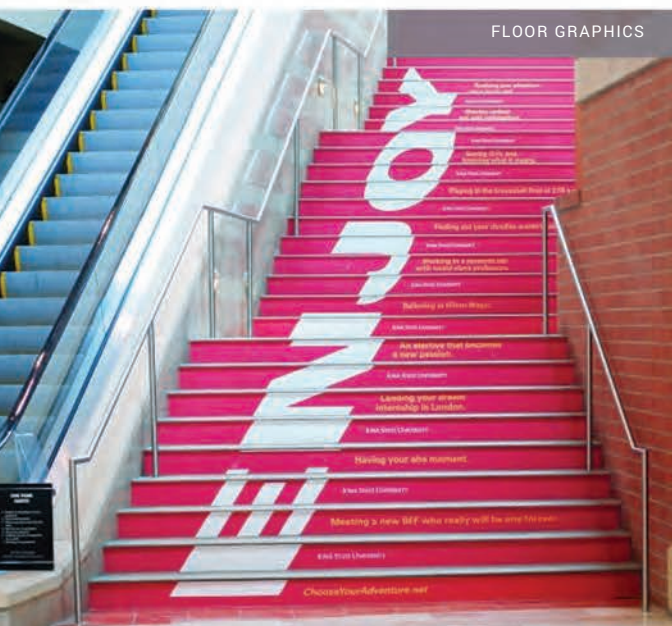
The UJV500 UV-LED printer easily handles production runs on a wide range of media. Produce indoor point-of-purchase displays, exhibit graphics, transit posters, backlit displays, floor graphics and more. For outdoor signage, fleet graphics or transit advertising that requires the utmost durability, Mimaki offers LUS-200 UV ink that was jointly-developed with 3M Company and carries the 3M™ MCS™ Warranty*. UV-LED technology is more ecologically friendly than conventional UV lamps because it uses less energy, lasts up to 20 times longer and does not contain heavy metals. Less energy also means lower power bills for you, so you can keep more of the profits produced on high production runs.



BACKLIT DISPLAYS



WINDOW GRAPHICS



FLOOR GRAPHICS



EXTERIOR SIGNAGE



SOPHISTICATED RIP SOFTWARE MAXIMIZES PERFORMANCE

Simultaneous layer printing.

RasterLink6 software enables simultaneous three-layer printing for two-sided viewing – color > white > color, or for white over/underprinting.

Simplified RIP operations.

The “Register as Favorite” feature saves regularly used RIP layouts and operations in a single window for quick retrieval.

Web software update function.

Program updates and profiles can be downloaded via the Mimaki website.

UJV500-160 SPECIFICATIONS | INKS

Item		Specifications
Print Head		On-demand piezo head (6 print heads with 3 staggered configuration)
Print Speed (300x450HQ, 6pass, Bi N)		4-color: 645 sqft/hr; 5-color (CMYK+W): 323 sqft/hr
Print Resolution		300, 600, 900, 1200 dpi
Ink	Type	UV: LUS-150 (C, M, Y, K, Lc, Lm, W) LUS-200 (C, M, Y, K)
	Ink Supply System	2L Ink Station
	Ink Circulation System	Mimaki Circulation Technology (MCT) for White ink only
	Ink Degassing	Equipped with Mimaki Degassing Module (MDM)
Maximum Print Width		63.3 in. (1,610mm)
Media	Maximum Width	63.7 in. (1,620mm)
	Maximum Thickness	1.0 mm or less
	Roll Weight	132 lb. (60 kg) or less
	Inside Roll Diameter	2 in. - 3 in.
Cutter		Y-direction cutter after head section
Media Heater		3-Way Intelligent Heater (pre/print/post)
Print Gap		1.5 mm ~ 7.0 mm (configurable by users, automatic recognition of thickness)
Print Accuracy	Absolute Accuracy	± 0.3 mm or ± 0.3% from specified print distance
	Repeatability	± 0.2 mm or ± 0.1% from specified print distance
UV Unit	Head Unit	UV LED (Lifetime approx: 5,000 hrs.)
	Post Cure Unit	Fluorescent UV tube lamp (Lifetime approx: 1,000 hrs.)
Interface		USB2.0
Applicable Standard		VCCI class A, CE Marking, CB Report, UL, RoHS Directive, Machinery Directive
Power Specification		AC 200 - 240V 50/60 Hz
Power Consumption		7.2 kVA or less
Operational Environment		Temperature: 59°F - 86°F
		Humidity: 35% - 65% Rh (non-condensing)
Dimensions (WxDxH)		151.6" x 77.8" x 66.5"
Weight		1763.6 lb. (800 kg)

Note: UV inks will not properly cure when printing speed is faster than that of Draft Mode.

Inkjet printers print using extremely fine dots, so colors may vary slightly after replacement of the printing heads. Also note that if using multiple printer units, colors could vary slightly from one unit to another due to slight individual differences.

Some of the samples in this brochure are artificial renderings. Specifications, design and dimensions stated may be subject to change without notice (for technical improvements, etc.).

The corporate names and merchandise names written in this brochure are the trademarks or registered trademarks of their respective companies.

Item	Color	1L Bottle
LUS-150	Cyan	LUS15-C-BA
	Magenta	LUS15-M-BA
	Yellow	LUS15-Y-BA
	Black	LUS15-K-BA
	White	LUS15-W-BA
	Lt. Cyan	LUS15-LC-BA
	Lt. Magenta	LUS15-LM-BA
	Ink Bottle 2L BK	SPA-0210 (empty bottle)
LUS-200	Cyan	LUS20-C-BA
	Magenta	LUS20-M-BA
	Yellow	LUS20-Y-BA
	Black	LUS20-K-BA
	Ink Bottle 2L BK	SPA-0210 (empty bottle)



About the 3M™ MCS™ Warranty
When finished products are printed using the UJV500-160 printer and LUS-200 ink onto media specified by 3M and are installed properly according to 3M's instructions, the quality is guaranteed for the warranty period.

When a warranty letter is needed, an application must be completed.

Following this application, a screening by 3M will be performed. If approved, issuance of the warranty certificate will follow. Warranty periods may vary based on type of application, type of media and graphic protection.

For further details, please refer to 3M's guide "Certificate of 3M™ MCS™ Warranty Program".



mimakiusa.com