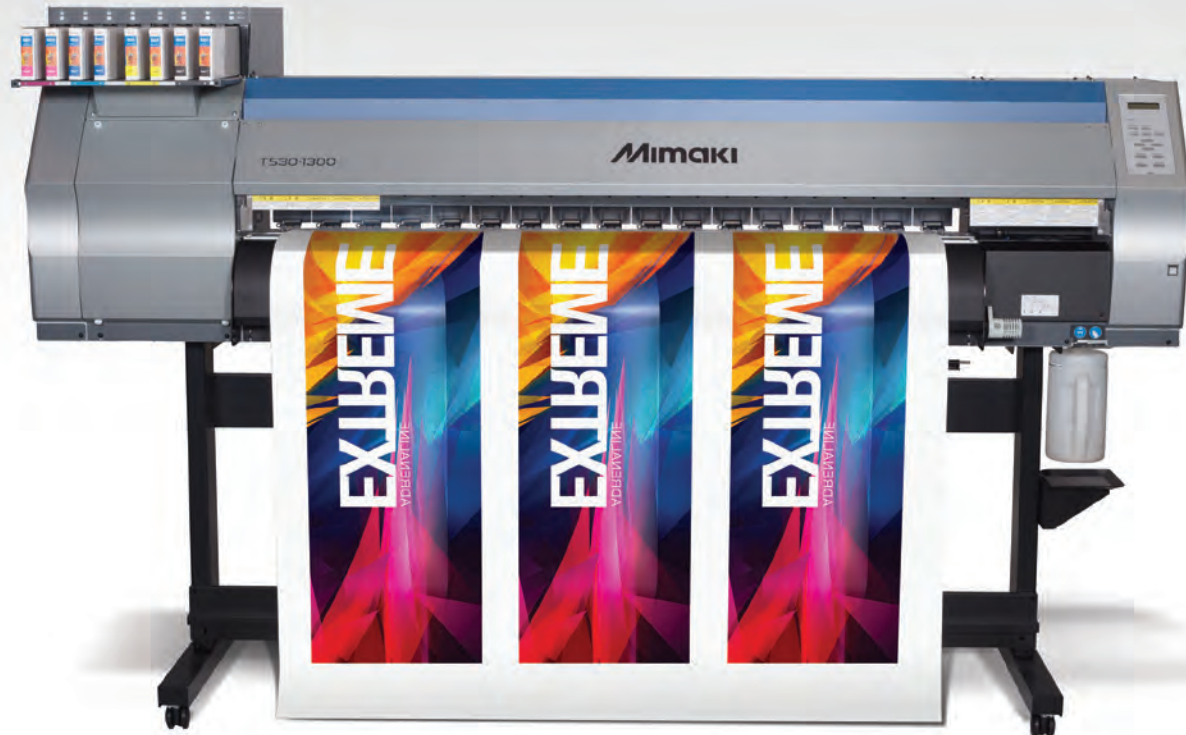


TS30



Mimaki TS30-1300 Dye-Sublimation Printer

54-inch, entry-level dye-sublimation printer



TS30 features-at-a-glance

- Dedicated transfer paper printer
- 54-inches wide
- Designed for ease of use
- High quality printing
- Uses Mimaki SB54 sublimation ink in a 4 or 6 color configuration
- Includes RasterLink6 RIP software

PURPOSE BUILT FOR EASY OPERATION

The TS30 printer features a selected set of functions designed for ease-of-use, even for novice users. The printer is bundled with Mimaki RasterLink6 RIP software, for a quick start immediately after installation.

INK VERSATILITY

High performance sublimation ink

Mimaki-developed and manufactured Sb54 sublimation inks deliver the same color density and reproducibility of popular Sb53 inks, but with more vibrancy. This formulation offers superior jetability that continuously delivers high quality printing.



UISS for extended printing

The Mimaki Uninterrupted Ink Supply System (UISS) automatically switches to a backup when one color is empty. In a 4-color set-up,

UISS is activated for each color, providing a maximum of 6 liters of color for long runs. An optional bulk ink system is available for use with 2-liter ink packs.

THE LATEST SUBLIMATION TECHNOLOGY



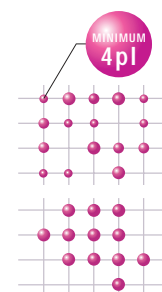
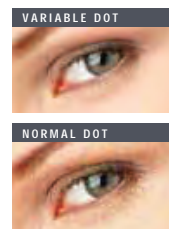
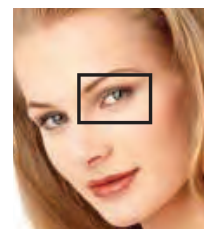
Mimaki Advanced Pass System 4 (MAPS4) technology reduces the appearance of banding.

MAPS4 applies ink in gradations over several passes using a blending mask pattern. This unique imaging technology facilitates higher speed bi-directional printing by reducing banding created by uneven ink drying. Print speeds of up to 211 square feet per hour can be achieved in four-color mode.

Smooth, high definition color with variable dot printing.

Variable dot printing produces a smoother, more natural gradation without the granular appearance seen in fixed-dot printing.

Variable dot sizes at a minimum of 4pl offers higher definition over standard dots.



BUILT-IN MEDIA CUTTER

An on-board media cutter is included, to easily cut the transfer paper after printing. This is especially useful for one-offs and smaller items for sublimation to hard surfaces.



UNIFORMS



SMALL SOFT SIGNAGE



CUSTOM APPAREL

Easy to use, dedicated transfer sublimation printer

The TS30-1300 printer is a 54-inch wide, dedicated transfer model that is ideal for first-time users or design shops producing short-run pieces, samples and custom work for transfer to textiles or hard surfaces. It is an entry-level model well-suited to just-as-needed production of apparel prototypes and custom goods. Without a heater and take-up device, the printer features only those functions needed for sublimation transfer printing, making it easy to operate.



Sample production, one-offs or custom pieces

Sublimation transfer technology can be used in a range of applications from soft goods to hard surface decoration. With the TS30, designers and print shops can produce only what's necessary without the need to subcontract, enabling them to maintain control of the quality and timeline throughout the printing-transfer-finishing process – as well as the entire revenue stream.



CERAMIC TILES



SPORTS GRAPHICS

CHOICE OF SOPHISTICATED RIP SOFTWARE MAXIMIZES PERFORMANCE

RasterLink6

Intuitive and user-friendly operation

Simplify RIP operations.

The “Register as Favorite” feature saves regularly used RIP layouts and operations in a single window for quick retrieval.

Color replacement function.

This feature enhances the ability to re-create printed images.

Web software update function.

Program updates and profiles can be downloaded via the Mimaki USA website.

TxLink3

For digital textile applications

Color replacement function.

The color replacement function enables a user to specify the desired printing color as the target color – useful for reproducing corporate colors and creating colorways.

Step and repeat functions.

Large seamless patterns can be produced from a single image, including repeat and mirror patterns.

Color management features.

Color QPC enables the operator to calculate and preview target color on a monitor.

TS30-1300 SPECIFICATIONS | INKS

Item		Specifications
Print Head		On-demand piezo head
Print Speeds (4 color mode)		Draft (2-pass): 211 SqFt (19.6 SqM) / Hr. Standard (6-pass): 123 SqFt (11.4 SqM) / Hr. High Quality (6-pass): 100 SqFt (9.3 SqM) / Hr.
Print Resolution		540, 720, 1080 dpi
Ink	Sublimation Ink	Sb54: 4-color (Bl, M, Y, K) 6-color (Bl, M, Y, K, LBl, LM)
	Ink Supply System	440 ml cartridge
Drop Size		Min: 4pl Max: 14pl
Maximum Print Width		53.6 in. (1,361 mm)
Media – Transfer Paper	Maximum Width	53.9 in. (1,371 mm)
	Thickness	1 mm or less
	Roll Weight	55 lb. (25 kg) or less
Media Cutter		Integrated
Interface		USB2.0
Power Specification		Single-phase AC 100 - 120V / AC 220 - 240V
Power Consumption		300 W or less
Operational Environment	Temperature: 68°F - 86°F	
	Humidity: 35% - 65% Rh (non-condensing)	
Dimensions (WxDxH)		Printer: 90 in. x 29 in. x 56 in.
Weight		Printer: 319.7 lbs. (145 kg)

Item	Color	440 ml Cartridge
Sb54 Sublimation	Blue	Sb54-BLT-44
	Magenta	Sb54-MT-44
	Yellow	Sb54-YT-44
	Black	Sb354-KT-44
	Light Blue	Sb54-LBT-44
	Light Magenta	Sb54-LMT-44

Print speeds are based on factory tests. Total throughput depends upon front-end driver/RIP file size, printing resolution, ink coverage, network speed, etc. For best performance, always use Mimaki original inks. Specifications subject to change without notice.

Inkjet printers print using extremely fine dots, so colors may vary slightly after replacement of the printing heads. Also note that if using multiple printer units, colors could vary slightly from one unit to another due to slight individual differences.

Some of the samples in this brochure are artificial renderings. Specifications, design and dimensions stated may be subject to change without notice (for technical improvements, etc.).

The corporate names and merchandise names written in this brochure are the trademarks or registered trademarks of their respective companies.



mimakiusa.com

Mimaki USA, Inc. | 150-A Satellite Blvd. Suwanee, GA 30024 | 888-530-4021 | info@mimakiusa.com

© 2016 Mimaki USA, Inc. All rights reserved. Ver. 1.0