

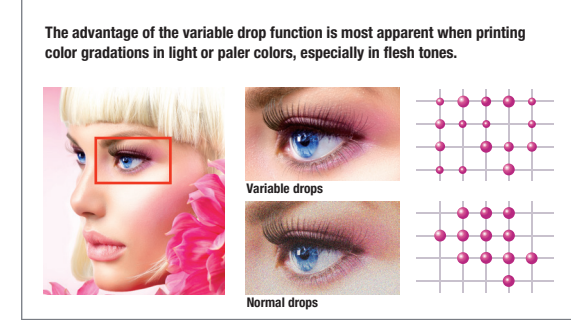
High quality printing

MAPS2 effectively reduces the appearance of banding.

MAPS2 (Mimaki Advanced Pass System 2) applies ink in gradations over several passes using a mask pattern that greatly reduces image banding. Immediate UV-LED curing also benefits banding reduction.



Smooth, high definition color is achieved with variable dot printing. The variable drop function allows for the output of three different drop sizes that produce a smoother, more natural gradation without the granular appearance seen in normal dot printing.



The JFX200 utilizes the perfect UV ink for any material and application.

LUS-150* is a flexible UV ink that is resistant to post-curing cracking.



A lower cost UV curable ink with 1.5 times the flexibility of conventional UV ink. The cured ink film is less tacky yet still resistant to cracking even with secondary processing.

LH-100 is a hard UV ink that is impervious to scratching when cured.



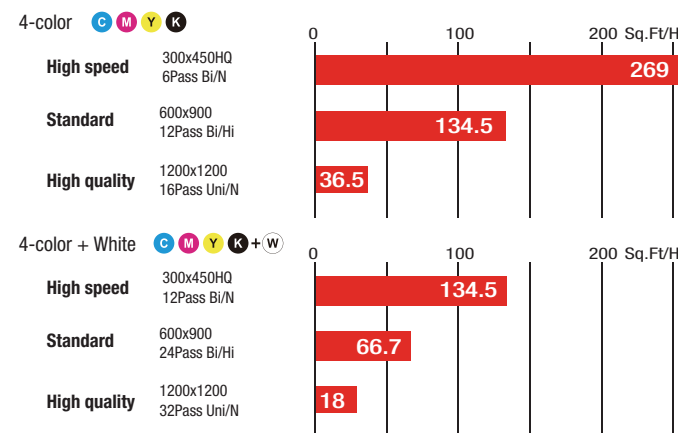
This advanced UV curable ink produces a hard ink film that is highly resistant to scratches and chemicals while providing excellent color reproducibility. Perfect for applications that require no secondary processing such as bending, twisting, etc.

PR-100 is a special undercoat primer UV ink for use on substrates such as glass and metals that may not readily accept UV ink. UV primer ink is transparent, letting the texture and quality of the substrate through. It can be flood or spot applied.

**The amount of flexibility exhibited by LUS-150 may differ depending on the type of print media used. It is advised to test the media before proceeding with a full print job.*

Print speed

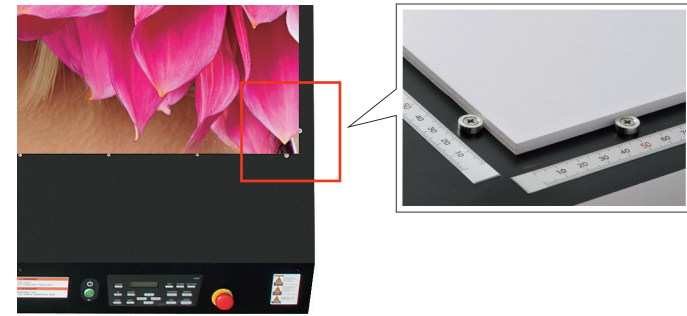
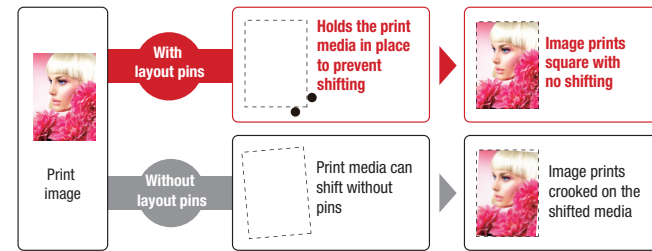
Print up to eight, full coverage 4'x8' panels per hour.



Ease of operation

Flatbed layout pins facilitate exact media positioning.

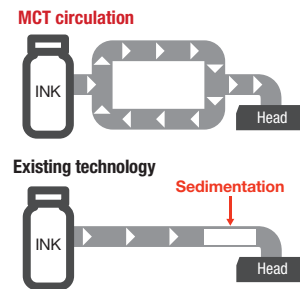
Users previously had to be extremely diligent in lining up the position of media when placing it on the flatbed of the printer to ensure that the media is correctly aligned. The JFX200 printer is now equipped with layout pins and a scale designed to help resolve alignment issues. The layout pins square up and secure the print media in place, preventing it from shifting when the flatbed vacuum is engaged. The edge flatbed scale is used to check the positioning of the print media before final printer settings are made.



Ease of maintenance

Mimaki Circulation Technology (MCT) for improved white ink imaging.

The setting of white pigment in the ink lines is a common problem when printing with white ink. The JFX200 utilizes MCT which eliminates this settling by regularly circulating the white ink. MCT enables stable white ink output from job startup through finish thereby reducing ink waste and downtime to clear settled ink.



Nozzle Recovery Function allows for continuous operation.

Even when nozzle washing has no effect on a malfunctioning nozzle and the nozzle is removed or taken offline, the Nozzle Recovery Function allows the recovery of the print quality and the continuation of printing.

With Nozzle Recovery Function



Without Nozzle Recovery Function



Eco-friendly features

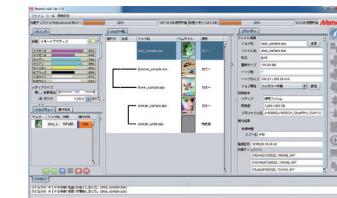


The JFX200 is environmentally friendly. UV curable inks produce very few VOCs (volatile organic compounds), no ozone, and very little odor that would otherwise require separate ventilation equipment.

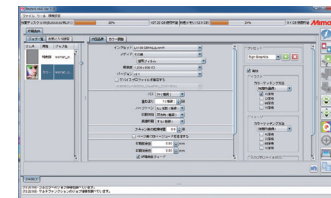
New RIP maximizes the performance of the JFX200-2513



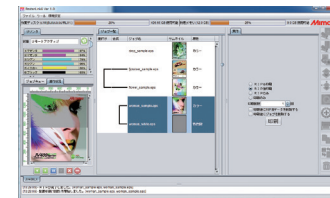
Mimaki's newest RIP software provides the JFX200 with a multitude of user-friendly features and functions.



Easy to follow icons enable intuitive operation.



A "related settings" feature streamlines RIP operations with the ability to save often used layouts and settings in the "Register as Favorites" option.



Printing progress can be monitored on the main screen.

- Layered printing can be performed in a single pass. Perfect for transparent media where an image may be viewed from two sides or for white and primer underprinting.
- Several profiles that match conditions can be simultaneously printed. This is useful for testing profiles without printing multiple prints.
- Program updates and profile downloads via the Mimaki website.

JFX200-2513 Specifications

Item	Specifications	
Head	On-demand Piezo head (Array of 2 heads stagger)	
Diagram resolution	300, 450, 600, 900, 1,200dpi	
Ink	Type	UV curable ink: LUS-150 (C, M, Y, K, W)
	Ink supply system	UV curable ink: LH-100 (C, M, Y, K, W, Cl)
	Ink circulation system ¹	Supplied from 1-liter bottles for each color
Inkjet primer	White ink circulation using Mimaki Circulation Technology (MCT)	
Maximum diagram dimensions (WxD)	PR-100	98.4" x 51"
	Dimensions (WxD)	98.4" x 51"
Media	Height	1.9"
	Weight	10.2 lb per square foot, non concentrated load
Media absorption	Absorption fixed through use of a vacuum	
Range accuracy	Absolute accuracy	±0.01 in. or ±0.3% of the specified range, whichever is larger
	Reproducibility	±0.008 in. or ±0.1% of the specified range, whichever is larger
UV device	UV-LED system	
Standard service life ²	Over 5,000 hours	
	USB2.0	
Interface	USB2.0	
Safety standard	VCCI class A, CE Marking, CB Report, UL (U.S. safety organization), RoHS directive, UL 60950-1, FCC class A	
Input power supply	Single phase, 200 V AC-240 V AC, 50 Hz/60 Hz, up to 15 A	
Power consumption	Up to 3.6 kVA	
	Temperature	59°F - 86°F
	Relative humidity	35% - 65% RH
Installation environment	Accuracy maintained temperature	64.4°F - 77°F
	Temperature gradient	Up to ±18F/h
	Dust	Similar to standard office environments
Install Dimensions (WxDxH)	173.2" x 88.5" x 49.2"	
Assembled Dimensions (WxDxH)	173.2" x 96.4" x 49.2"	
Weight	1433 lb	

1 - MCT works only with white ink. 2 - The standard service life times listed are estimates and do not guarantee the operation.

Some of the samples in this brochure are artificial renderings. Specifications, design and dimensions stated may be subject to change without notice (for technical improvements, etc.) The corporate names and merchandise names written in this brochure are the trademarks or registered trademarks of their respective companies. Inkjet printers print using extremely fine dots, so colors may vary slightly after replacement of the printing heads. Also note that if using multiple printer units, colors could vary slightly from one unit to another due to slight individual differences.



mimakiusa.com

Mimaki USA, Inc. | 150-A Satellite Blvd. Suwanee, GA 30024 | 888-530-4021 | info@mimakiusa.com

© 2014 Mimaki USA, Inc. All rights reserved. Ver. 1.1



BIG THINGS COME IN SMALL PACKAGES

The Mimaki JFX200-2513 flatbed UV-LED printer.

JFX200-2513



Low temperature UV-LED curing. Energy efficient. Reduced VOCs. 4' x 8' flatbed area.

LUS150 UV Ink • C M Y K + W

LH-100 UV Ink • C M Y K + W + C

Up to 1200 dpi

SIGN & GRAPHICS





Smaller footprint. Bigger possibilities.

The JFX200-2513 printer introduces a smaller footprint flatbed design with a 4' x 8' landscape print mode and bed size small enough to fit in most sign and graphic print shops. Access to the operation panel, ink delivery system and vacuum adjustment controls are easily accessible from the front of the printer. The JFX200 is fitted with the latest UV-LED lamp curing technology and features a unique ink delivery system that further increases the flexibility you expect in a new generation UV cure flatbed printer.



Compact footprint for installation and usage
The JFX200's smaller size allows for usage in many smaller print facilities and shops.



Two-layer print function
Printing separate layers of both white and CMYK color allows for faster printing on clear and transparent substrates.

Application versatility offers a wider variety of media choices.

The capability to print on media and substrates up to 1.9" thick, along with a 4' x 8' bed size, allows for a diverse range of printing options. UV inks are durable in both indoor and outdoor conditions and offer a high level of abrasion resistance.

The Mimaki JFX200 printer is ideally suited for applications such as backlit films, signs & displays, interior decor, glass, metal and much more.



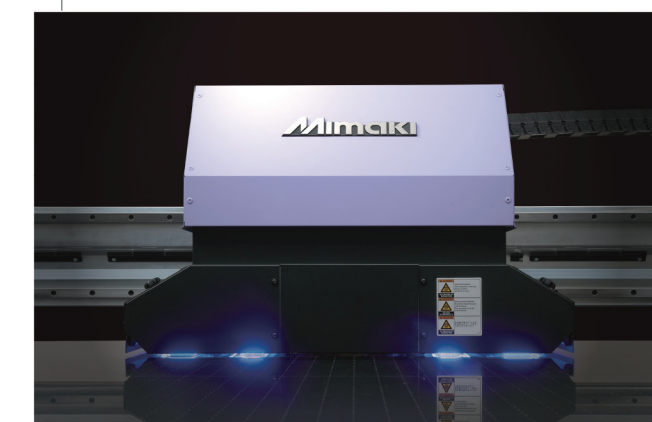
Vacuum table unit
The vacuum table is easily controlled with ON/OFF switches located in the front area of the printer. The two toggle switches separately control each of the two vacuum partitions that facilitate secure and accurate media positioning.



Bulk ink supply system
With Mimaki's newly developed ink supply system, 1-liter bottles of UV ink are easily and quickly inserted and removed from the front of the printer. The system accommodates up to 8 bottles of ink for CMYKx2 or CMYK+W+C and UV Primer ink.



Direct to media/substrate printing
The JFX200 is capable of handling all types of media and substrates including acrylics, foam board, corrugated plastics, metal – almost any media up to 1.9" thick.



Low power, long life UV-LED curing lamps
The UV-LED curing unit of the JFX200 has an exceptionally long life, lower power consumption and reduced heat output. It is ideal for printing on media that is vulnerable to thermal deformation or color change. Its low VOC output doesn't require special workplace ventilation.