

KIP 7700/7900 SYSTEMS  
EXCEPTIONAL VALUE - SUPERIOR PRODUCTIVITY





## KIP 7700/7900 SERIES SYSTEMS

*The KIP 7700/7900 multifunction wide format systems provide the ultimate in versatility, advanced technology, superior image quality and reliable performance.*

*Designed to deliver exceptional value, sustainable benefits and cost effective operations, combined with superior productivity and integrated systems control for all network printing, scanning and copying operations.*

*The versatile KIP 7700/7900 Series is available in a wide range of modular, integrated expandable systems configurations to meet specific production demands.*

### ***KIP 7700/7900 Network Printing Systems***

**KIP 7700 Series** productivity is rated at 301 sq. m. or 540 A1 size prints per hour. Media capacity is available in 4 quick change media decks featuring 150 m. roll capacity with integrated bypass sheet feeder.

**KIP 7900 Series** productivity is rated at 434 sq. m. or 780 A1 size prints per hour. Media capacity consists of 4 quick change media decks featuring 150 m. roll capacity with integrated bypass sheet feeder.

### ***Space Saving KIP 7700/7900 Multifunction Systems***

KIP 7700/7900 print copy and scan systems accurately reproduce technical documents at astonishing speed in true 600 dpi optical resolution. The KIP 7700/7900 configured with the KIP 720 scanner delivers maximum digital imaging quality and performance while reducing the total system footprint.

The system automatically senses the original document width and dynamically adjusts exposure settings during the scanning process for maximum quality.



*KIP 7700/7900 Network Printing Systems*



*KIP 7700/7900 Multifunction Systems*



### ***KIP 7700/7900 Mono/Colour Production Systems***

KIP 7700/7900 production systems with KIP 2300 scanner provide modular, high demand mono & colour solutions for the most discerning reproduction centers. A range of professional grade KIP software also delivers colour management features and powerful image editing tools that perform difficult tasks easily and with consistent results from one job to the next.

Due to a highly advanced design, KIP 7700/7900 production systems reproduce complex graphics and photos as accurately and effortlessly as simple line drawings.

KIP 7700/7900 production systems set a consistently high standard for speed, quality and flexibility in a digital image capture system.

A durable design combined with top quality construction materials ensure long term reliability with consistent copy and scan quality in the most demanding mono & colour imaging production environments.



*KIP 7700/7900 Multifunction Production Systems*

## KIP 7700 / 7900 SYSTEM ADVANTAGES

### Outstanding Value

At KIP, we believe value makes the difference. We incorporate the most advanced technologies into every KIP system; technologies that provide the lowest in class cost of operation, best in class ease of use, the highest level of flexibility and expandable designs that offer space saving single footprint configurations.

KIP 7700/7900 systems provide real value and customer benefits by taking advantage of software workflow efficiencies that help reduce paper usage by previewing prints and scans, automatic media and original size recognition and image positioning features to avoid media waste. KIP 7700/7900 systems utilise patented KIP HDP technology that greatly reduces overall toner consumption, completely eliminates waste toner and reduces replacement parts. KIP systems also provide reduced energy consumption and are Energy Star and RoHS compliant.

### Key Features

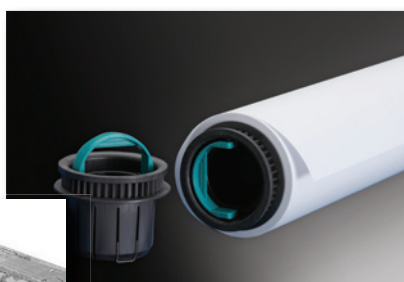
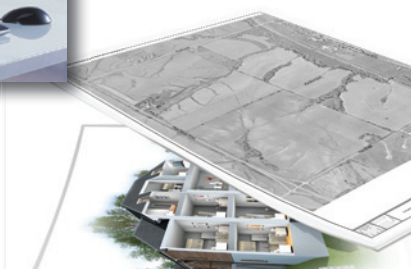
- Lowest in class cost of operation
- 100% toner efficiency
- Space saving design
- Illustrated operator guides on touchscreen
- Efficient software workflow
- Integrated accounting system

### Exceptional Versatility

KIP 7700/7900 systems are available in a variety of system configurations. As a network print system, they may be combined with an integrated print rack or a high capacity auto stacking system. As a print, copy and scan system they may have the KIP 720 scanner positioned on top of the printer for a single, space saving footprint and can be configured to return originals to the operator or stack them on a rear rack for increased productivity.

### Key Features

- Expandable system configurations
- Meets strict security standards
- Convenient paper loading system
- USB printing and scanning support
- Expand capabilities with KIP Colour Pro Software
- On screen copy, print & scan previews



### Superior Productivity

KIP 7700/7900 systems deliver consistent print quality from the first page of a print job to the last and from one job to another. Demanding print runs and compressed delivery times coupled with the highest quality expectations are satisfied by these new systems. Excellent across the board performance is sure to satisfy the most stringent demands on quality and top productivity.

A state-of-the-art print unit maintains system productivity while ensuring maximum uptime to make every minute productive. Advanced self diagnostic systems eliminate potential print delays by providing designated operators with system status alerts via email if paper or toner replenishment is needed.

### Key Features

- High resolution, 24-Bit colour image quality
- Copy directly to inkjet printers or create colour digital files
- Concurrent digital print and scan
- Powerful multi-thread processing
- Advanced greyscale management
- Fine line image enhancement

### Advanced Technology

KIP 7700/7900 systems comprise an advanced range of monochrome and colour printing, copying and scanning solutions optimised for economical output. The finely tuned interaction of all KIP software components maximises the efficiency of production workflows, offers greater ease of use and accelerates the entire job production cycle. These solutions offer industry leading print speeds with high-capacity paper handling and high yield toner cartridges, as well as a wide range of features for greater productivity, media versatility, networkability and flexible system configurations.

**KIP 7700**

**16,200**  
A1 size per week

**3,240**  
A1 size per day

**540**  
A1 size per hour

**KIP 7900**

**23,400**  
A1 size per week

**4,680**  
A1 size per day

**780**  
A1 size per hour

### Key Features

- KIP software included with KIP 7700 / 7900 systems
- Range of integrated scan & copy technologies
- Unified accounting system links all KIP print management applications
- Individually calibrated LED elements deliver pixel perfect images
- Automatic media and toner monitoring
- Dependable cost controls



# KIP 7700/7900 SERIES NETWORK PRINT SYSTEMS

## *Key Features*

- Integrated touch screen with advanced user management
- 600 x 1800 dpi Imaging Technology
- 100% toner efficiency
- Energy Star qualified
- Automatic environmental compensation for temperature and humidity
- PC and web based submission tools included with each system
- Certified application drivers incorporate accounting functionality

## *KIP 600 x 1800 DPI Imaging Technology*

The KIP 600 x 1800 dpi Imaging Technology provides maximum print quality to satisfy the demands of modern CAD design. The KIP 600 x 1800 dpi Imaging Technology creates greater definition in print quality, particularly with greyscale, imbedded photos, arcs and curved line reproduction. The KIP 600 x 1800 dpi Imaging Technology is a standard feature in the KIP 7700/7900 printing systems.

## *Monochrome Printing*

KIP 7700/7900 systems achieve a new level of precision print production based on patented KIP High Definition Print Technology. HDP is an innovative approach to wide format printing that has quite literally redefined the standard for production print quality.

A specialised print head design featuring individually calibrated LED pixels provides smooth and consistent fine lines, half tones and graphic image quality. An oil-free fusing process and 100% efficient KIP toner technology operate cleanly without carriers, developers or waste. In addition, each system's integrated media capacity features an easy loading end cap system and electronic pulse signal cutters to ensure exceptionally accurate sheet sizes for a highly professional look.

These systems efficiently produce documents sent via application drivers, networked PC's or web based applications and submission tools. The KIP 7700/7900 print systems address demanding print runs and compressed delivery times with the highest quality expectations in virtually any digital imaging environment and can be easily upgraded to incorporate monochrome and colour copying and scanning.



## *KIP 7700/7900 Series Network Print System Features*

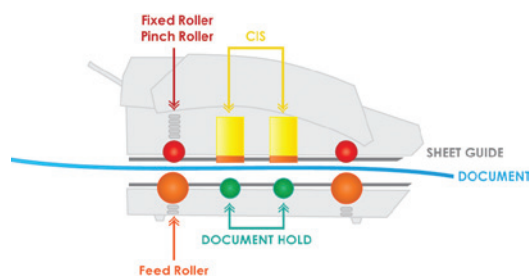
- 9 or 13 'A1' size prints per minute from 4 integrated media rolls
- Integrated touch screen with advanced user management
- PC and web based submission tools included with each system
- Certified application drivers incorporate accounting functionality

# KIP 7700/7900 MONO/ COLOUR MULTIFUNCTION SYSTEMS

## Monochrome Copying & Scanning

KIP 7700/7900 systems with KIP 720 scanner handle the full spectrum of monochrome and colour scanning applications making it ideal for technical imaging as well as full colour graphics. In addition, KIP 7700/7900 systems provide the capability to scan to network PC's, web based plan room applications and removable media drives. A range

of convenient preset quality controls are available to assist operators with making proper compensations and the system dynamically adjusts exposure settings while scanning.



*The KIP 720 scanner features a support system to enhance feed reliability*

## KIP Colour Advanced

Colour scanning, copying and printing is accomplished directly from the KIP touchscreen display with preset selections for image quality, file naming, copy or print count, image sizing, and rotation. KIP delivers world class colour scanning, copying and printing directly to industry standard inkjet printers that have been fully integrated with KIP software.

## KIP 7700/7900 Mono/ Colour Multifunction System Features

- Single, space saving system footprint with no need for additional PCs
- Create colour copies directly to inkjet printers
- Scan documents into a wide range of monochrome and colour file formats
- Image presets with real time copy and scan previews provide maximum quality control



*Perform all scan, copy and print functions using the integrated touchscreen user interface*

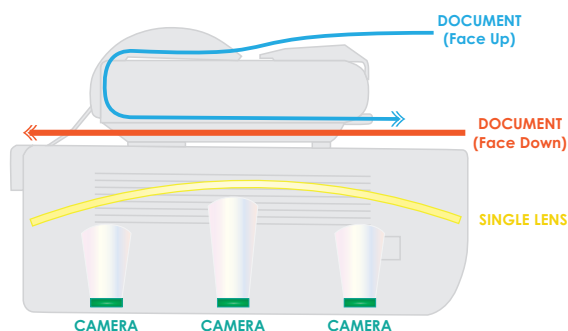


# KIP 7700/7900 MODULAR PRODUCTION SYSTEM

## Production Imaging

KIP 7700/7900 systems with KIP 2300 scanner are professional grade monochrome print and mono/colour copy & scan solution that provides high demand users with the ultimate in imaging technology.

KIP 7700/7900 production systems set a uniquely high standard for speed, quality and flexibility in a digital image capture system. Best in class productivity is achieved from advanced CCD image capture and new KIP Tru-Speed Technology for high speed throughput without delays. World-class flexibility is delivered via the ability to scan face up or face down and scan thick mounted originals and single sheets of paper from a single unit.



*Three independent imaging cameras with an advanced laser alignment system and self calibrating diagnostics provide an extraordinary level of quality.*

## Enhanced Monochrome Image Quality

KIP 2300 imaging technologies create crisp black and white prints, copies and scans of technical drawings, photographs, maps and renderings. An advanced grey-scale mode is ideal for accurate photo reproductions.

## World Class Colour Quality

Best in class productivity is achieved via an advanced tri-linear camera based image capture unit. Outstanding image quality is delivered through the innovative use of bright white LED light sources for illumination and 600 x 600 dpi resolution.



## KIP Cloud Scanning

Scanning via email is a fresh approach to revising documents that drastically improves modern collaboration efforts. Hardcopy documents may now be copied to KIP systems anywhere in the world and output on inkjets or KIP colour systems instantly.

- Use any phone, tablet, laptop or PC
- No need to install drivers or software applications
- No learning curve, no training
- Submit print ready files via email attachments
- Optional keywords provide expanded flexibility





### **KIP 2300 Key Features**

- Ultra fast imaging with KIP Tru-Speed technology
- Dual feed flexibility – face up or face down scanning
- 24-Bit RGB true colour image capture
- Thick/mounted stock support with integrated document support system
- Visual operator feedback system for productive stream-scanning
- Extended optical system warranty

### **Mono/Colour Imaging Key Features**

- Mono scan speeds up to 304 mm per second!
- Colour scan speeds up to 152 mm per second!
- High resolution, 24-Bit colour image quality
- Advanced KIP imaging technologies deliver superior results
- Copy & print directly to inkjet printers or create colour digital files
- Easy system calibration process ensures colour copy, print & scan accuracy
- Increase system functionality with optional KIP Colour Pro software

### **KIP 2300 Mono Scan Speed**

| DPI       | Monochrome Scan Speed |             |
|-----------|-----------------------|-------------|
| 600 x 600 | 127mm - sec           | 7.6m - min  |
| 400 x 400 | 190mm - sec           | 11.4m - min |
| 300 x 300 | 254mm - sec           | 15.2m - min |
| 200 x 200 | 304mm - sec           | 18.2m - min |

### **KIP 2300 Colour Scan Speed**

| DPI       | Colour Scan Speed |            |
|-----------|-------------------|------------|
| 600 x 600 | 50mm - sec        | 3m - min   |
| 400 x 400 | 76mm - sec        | 4.5m - min |
| 300 x 300 | 101mm - sec       | 6m - min   |
| 200 x 200 | 152mm - sec       | 9.1m - min |



*KIP Tru-Speed Technology boasts superior transmission rates of up to 2.38 Gbits/s, ensuring the scanner hardware operates at full speed with no delay times due to data transfer.*

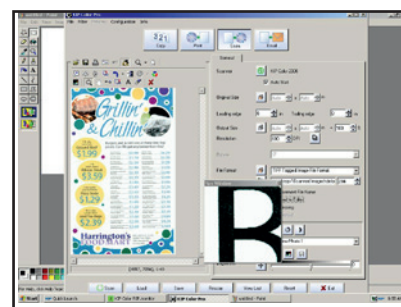


### **KIP Colour Pro Software**

This powerful software package delivers advanced copying and scanning features and also includes the ability to RIP files to print. Users may print in monochrome or colour to multiple printers, ensuring speed, flexibility and accurate production of high-quality colour copies.

### **KIP Colour Pro Imaging Features**

- Custom Quality Filters
- Image Editor
- Image Deskew
- Image Despeckle
- Image Nesting
- Area Crop
- Wipeout / Mask
- Paneling
- Colour Management
- Print to Inkjet (RIP)
- Print Collated Colour Sets
- Scan to email



*Optional KIP Colour Pro provides advanced copying, scanning and printing of all monochrome and colour documents.*

# PRINT MANAGEMENT APPLICATIONS



## Touchscreen Productivity

KIP systems eliminate the need for additional PC hardware by printing documents directly from the touchscreen software. Scanned images can be easily recalled and printed from the touchscreen mailbox storage system or may be concurrently printed during scan to file operations.

Integrated support for removable media such as standard USB drives provides the ability to print documents from a range of media formats, as well as scan documents directly to them.

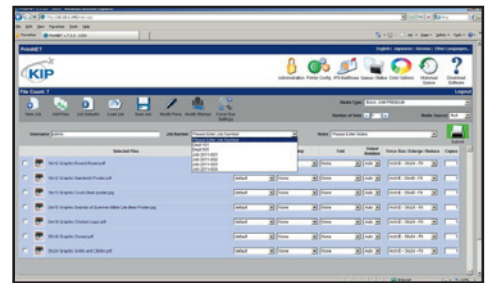
## Touchscreen Key Features

- Print directly from removable USB-based media storage drives and system mailboxes
- Concurrent print and scan to file at the touchscreen display
- Secure, centralised data storage & access
- Integrated print previews of each file within a complete job set



## KIP PrintNET

KIP PrintNET is a true web-based print production tool that delivers powerful colour file viewing & printing, job queue management and administration features without the need to install any software applications on network computers. Users may select and send single or multiple files to KIP systems, complete with image adjustments such as scaling, stamping and colour management! In addition, KIP PrintNET generates Email reports detailing system usage on demand or at designated intervals.



*Web based, browser independent*



## KIP Cloud Printing

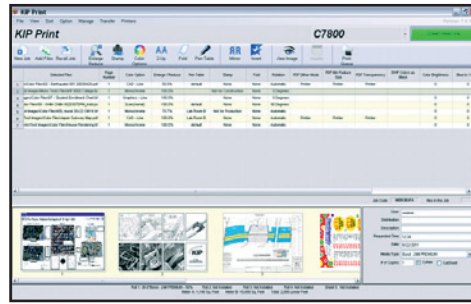
KIP Cloud Printing delivers the ability to email files to KIP systems for immediate or future viewing and printing. Simple key words can be used in the email body to specify printing instructions for each job set or file, helping mobile users to stay productive.





## KIP Print

KIP Print network printing software is an easy to use application designed to provide operators with a fast and accurate means of producing high quality print sets from all types of wide format digital files. An intuitive ribbon style interface with an emphasis on job building; featuring column browsing, colour thumbnail previews and total preflight control. Colour and B&W documents are efficiently selected for printing in collated sets with the ability to designate custom output preferences before print submission.



*Intuitive new ribbon style interface*

### KIP Print Key Features

- New Graphical User Interface
- Easy to use automated installation & setup
- Windows 7 style ribbon bar for easy feature selection
- Thumbnail preview and image size while selecting files
- Graphical choice of predetermined image settings
- Force size scaling to page size and roll width
- Two-Up printing for multicopy nesting
- Output Size updates as scaling is adjusted
- WYSIWYP thumbnail image viewer
- Custom job build columns
- Re-order and set individual settings for multi-page files
- Custom fold pattern for each file
- KIP Cost Review Application
- KIP Track System



### KIP AutoCAD Driver Features

- HDI drivers for AutoCAD
- Displays current media information and real time system status
- Raster image control to adjust gamma and density levels for embedded raster data
- Data tracking for job accounting including user name, job number, and description fields
- User and job number passwords may be required before printing
- Select bond, vellum, film or custom media
- Image stamping allows placement of text and/or stored images anywhere on the document

### Microsoft Certified KIP Windows Driver Features

- 2-way communication with KIP 7700/7900 system
- Displays current media information & real time system status
- Print in monochrome and greyscale
- Selection of folding parameters
- 64-Bit operating system compatibility
- 1 – 999 copies or collated sets
- Label documents with user name, job number and data tracking information
- Job accounting and data tracking includes user name, job number and data tracking information
- Print from design, project management and markup applications



# KIP 7700/7900 SYSTEM OPERATIONS



## KIP Track System

When activated, the KIP Track system requires operators to provide username & password information before operating a KIP system. Activity reports can then be generated related to individual users or projects. KIP Track print controls are integrated with the KIP Cost Review Application and included in all KIP print production software applications.

## Touchscreen Controls

The integrated KIP touchscreen operator panel provides the ultimate in copy, scan and print technology right at your fingertips. KIP systems eliminate the need for additional PC hardware by printing documents from removable media such as standard USB drives, network drives, and scan mailboxes directly from the touchscreen.



KIP 7700/7900 Series touchscreen interface



## KIP Cost Review Application

Print costs vary due to toner coverage, media type and system maintenance.

These costs are calculated by the KIP Cost Review Application and translated into detailed reports to accurately invoice users, departments, projects or clients. KIP Cost Review Application reports can be delivered via email at or printed on demand.

Standard Reports include:

- Printable Usage Summary
- View Toner Coverage Report
- View Media Details
- View Recent Jobs Report

| Distribution            | Job | Qty | Cost    | Fees | Total  | Fees     |
|-------------------------|-----|-----|---------|------|--------|----------|
| 001 100000 CAD PRINTING | 0   | 0   | \$94.90 | 179  | 2029.7 | \$2029.7 |
| 002 100000 CAD PRINTING | 0   | 0   | \$94.90 | 179  | 2029.7 | \$2029.7 |
| 003 100000 CAD PRINTING | 0   | 0   | \$94.90 | 179  | 2029.7 | \$2029.7 |
| 004 100000 CAD PRINTING | 0   | 0   | \$94.90 | 179  | 2029.7 | \$2029.7 |
| 005 100000 CAD PRINTING | 0   | 0   | \$94.90 | 179  | 2029.7 | \$2029.7 |

KIP 7700/7900 Cost Review application

## Information Center

The KIP 7700/7900 is configured to display contact information specific to the KIP authorised service provider. This feature is designed to assist operators when requesting consumables, service calls and system upgrades.

## System Guides

The KIP 7700/7900 operator panel displays illustrated guides to explain system operations including mono/colour copy and scan-to-file functions. In addition, step-by-step media and toner replacement procedures are automatically displayed when necessary to provide users with system instructions.

The KIP System Guide is available at the KIP 7700/7900 operator panel and downloadable via KIP PrintNET to assist operators by providing a quick reference resource for all KIP application features.



On demand illustrated operator guides

## System Upgrades

Each configuration may be easily field upgraded to provide new system features at any time, including mono/colour scan-to-file and copy.

### **KIPFold 7700/7900**

The KIPFold 7700/7900 system automates document finishing requirements by providing folding, stacking and collation in a compact design. The system intelligently communicates with KIP 7700/7900 systems and is fully integrated with all KIP copying and printing applications and drivers to provide seamless workflow integration.

### **KIPFold 7700/7900 Packet Standards**

- Metric Print Sizes: A3 – A0
- Folded Packet Sizes: 210 mm x 297 mm
- Margin: 0 – 50 mm user selectable
- Packet Orientation: Portrait or Landscape (Arch., Eng.) Portrait (Metric)



### **Fold Types**

The KIPFold 7700/7900 provides the flexibility to fold copies and prints into all architectural, engineering and metric standard packet sizes. Prints are accepted in either landscape or portrait format, allowing for fast and efficient folding operations. In addition, users may specify individual packet orientation – either landscape or portrait.

### **KIP Stacking Solutions**

Consistent, accurate and reliable KIP stackers deliver neatly stacked and collated document print sets. From simple print catchers to intelligent online stacking systems, KIP solutions can be easily tailored to suit your exact needs, while maintaining the flexibility to grow as demands increase.



*KIP 1200 Stacker stacks 1000 A4–A0 size prints*

# KIP 7700/7900 SERIES CONFIGURATIONS

## KIP 7700/7900 NETWORK PRINT SYSTEM

| Function                        | Standard | Optional |
|---------------------------------|----------|----------|
| Mono Network Printing           | ✓        |          |
| Touchscreen User Interface      | ✓        |          |
| PC-Based Submission Application | ✓        |          |
| Web-Based Submission            | ✓        |          |
| Windows Certified Drivers       | ✓        |          |
| AutoCAD Drivers                 | ✓        |          |
| Unified Accounting              | ✓        |          |
| DWF Printing                    | ✓        |          |
| DWF Multi Page Scanning         | ✓        |          |
| System Administration Functions | ✓        |          |
| PDF Sets Printing               |          | ✓        |
| KIP Fold                        |          | ✓        |

## KIP 7700/7900 MULTIFUNCTION SYSTEMS

| Function                        | Standard | Optional |
|---------------------------------|----------|----------|
| Mono Network Printing           | ✓        |          |
| Touchscreen User Interface      | ✓        |          |
| PC-Based Submission Application | ✓        |          |
| Web-Based Submission            | ✓        |          |
| Windows Certified Drivers       | ✓        |          |
| AutoCAD Drivers                 | ✓        |          |
| Unified Accounting              | ✓        |          |
| DWF Printing                    | ✓        |          |
| DWF Multi Page Scanning         | ✓        |          |
| System Administration Functions | ✓        |          |
| Mono Copying                    | ✓        |          |
| Mono Scanning                   | ✓        |          |
| Colour Scan                     | ✓        |          |
| Colour Copy to Inkjet           | ✓        |          |
| Colour Printing to Inkjet       | ✓        |          |
| PDF Sets Printing               |          | ✓        |
| KIP Fold                        |          | ✓        |

## KIP 7700/7900 PRODUCTION SYSTEMS

| Function                        | Standard | Optional |
|---------------------------------|----------|----------|
| Mono Network Printing           | ✓        |          |
| Touchscreen User Interface      | ✓        |          |
| PC-Based Submission Application | ✓        |          |
| Web-Based Submission            | ✓        |          |
| Windows Certified Drivers       | ✓        |          |
| AutoCAD Drivers                 | ✓        |          |
| Unified Accounting              | ✓        |          |
| DWF Printing                    | ✓        |          |
| DWF Multi Page Scanning         | ✓        |          |
| System Administration Functions | ✓        |          |
| Mono Copy & Scan                | ✓        |          |
| Colour Scan                     | ✓        |          |
| Colour Copy to Inkjet           | ✓        |          |
| Colour Printing to Inkjet       | ✓        |          |
| PDF Sets Printing               |          | ✓        |
| KIP Colour Pro Software         |          | ✓        |
| KIP Fold                        |          | ✓        |



KIP 7700/7900 Network Print System



KIP 7700/7900 Multifunction System with KIP 720 Scanner



KIP 7700/7900 Dual Footprint Production System with KIP 2300 Scanner





## THE COLOUR OF KIP IS GREEN



*KIP is committed to product designs that promote environmental health and sustainability. Our goal is to consistently improve and refine the technologies in KIP products to keep our planet green.*

### *KIP Printers and Systems Feature These Earth Conscientious Aspects:*

- Energy Star Qualified
- ROHS Compliancy
- ISO 14001 Standards
- Ozone Emissions Filters
- UL/UL-C Approved
- 100% Toner Efficiency – No Waste Toner
- Organic, Recyclable Photoreceptors
- Recyclable Toner Containers
- Prints on Recycled Paper
- Automatic Image Rotation and Media Selection Ensure Minimal Paper Waste

### *Engineered for Sustainability*

The greatest environmental impact of KIP products is through the actual operation of our products and solutions. Our goal is to improve the customer experience by integrating environmental considerations into our business strategy – resulting in superior products.

Customers increasingly value environmental aspects of products, such as energy efficiency, emissions reduction and the ability to recycle exhausted supply containers. We differentiate our products by integrating such features to deliver a low total cost of ownership and an improved user experience.

In packaging, we strive to minimise the overall use of materials, utilise recycled and recyclable materials when possible and reduce packaging size and weight to minimise transportation fuel impact.

KIP factories operate in full compliance with the strict code of the ISO 14001 Environmental Management Systems Standard, which provides the requirements for organisations wishing to operate in an environmentally sustainable manner.



# KIP 7700/7900 SPECIFICATIONS

## GENERAL

|                                |   |
|--------------------------------|---|
| <b>Description</b>             | Network printer or multifunction system (print/copy/scan) in single or dual footprint configurations, 4 rolls |
| <b>Type</b>                    | Electrophotography (LED) with organic photoconductor (OPC) and closed toner system                            |
| <b>Speed</b>                   | KIP 7700: 5 A0 size pages per minute / KIP 7900: 7 A0 size pages per minute                                   |
| <b>First print output time</b> | KIP 7700: 11 seconds A1 size page / KIP 7900: 8 seconds A1 size page  |
| <b>Warm up time</b>            | Instant from standby, <4 minutes from start up  |

## PRINTER SPECIFICATIONS

|                            |  |
|----------------------------|--|
| <b>Print resolution</b>    | 600 x 1.800 dpi  |
| <b>Paper capacity</b>      | 558 sqm., 4 rolls  |
| <b>Output sizes width</b>  | 279 - 914 mm   |
| <b>Output sizes length</b> | 6 m standard, 152 m optional   |
| <b>Media weight</b>        | Bond/Plain 64 - 84 gsm; Vellum/Translucent/Tracing 80 gsm; Film 75 micron              |
| <b>Media type</b>          | Bond/Plain/Vellum/Translucent/Tracing, Film (compatible with recycled & coloured bond) |

## ENVIRONMENT

|                                |                              |
|--------------------------------|------------------------------|
| <b>Electrical requirements</b> | 220-240 V, 50/60 Hz, 16 A    |
| <b>Power consumption</b>       | Sleep <14 W; printing 2.0 kW |
| <b>Dimensions (WxDxH)</b>      | 1,385 x 820 x 1,590 mm       |
| <b>Weight</b>                  | 370 kg                       |

## IMAGE PROCESSING

|                                |   |
|--------------------------------|---|
| <b>Controller type</b>         | KIP IPS with Windows XPe  |
| <b>Memory</b>                  | 1 GB DDR2 standard; upgradable to 2 GB  |
| <b>Compatible file formats</b> | PDF, DWF, HPGL 1/2, HP-RTL, Calcomp, 906/907, CALS Group 4, TIFF Group 4, PCX, CIT/TG4, VCGL, Uncompressed, Grayscale TIFF, TIFF Packbits, IOCA, EDMICS, TLC, PNG, JPEG |

## SCANNING SYSTEMS FOR MULTIFUNCTION CONFIGURATIONS

### KIP 720 SCANNER

|                            |  |
|----------------------------|--|
| <b>Scanner type</b>        | C.I.S. with KIP RTT technology   |
| <b>Scan resolution</b>     | 600 x 600 dpi optical resolution   |
| <b>Scan speed</b>          | Up to 180 mm per second  |
| <b>Scan format</b>         | TIFF, Multipage TIFF, PDF, PDF-A, Multipage PDF, DWF, Multipage DWF, JPEG, CALS            |
| <b>Scan destination</b>    | Local USB (removable media), unlimited IPS mailboxes (local), unlimited FTP, unlimited SMB |
| <b>Original size width</b> | 279 - 914 mm   |
| <b>Original thickness</b>  | Up to 1.6 mm   |

### KIP 2300 SCANNER

|                            |  |
|----------------------------|--|
| <b>Scanner type</b>        | C.C.D. with KIP True•Speed technology and KIP RTT technology                               |
| <b>Scan resolution</b>     | 600 x 600 dpi optical resolution   |
| <b>Scan speed</b>          | Up to 18 m per minute (mono); up to 9 m per minute (colour)                                |
| <b>Scan format</b>         | TIFF, Multipage TIFF, PDF, PDF-A, Multipage PDF, DWF, Multipage DWF, JPEG, CALS            |
| <b>Scan destination</b>    | Local USB (removable media), unlimited IPS mailboxes (local), unlimited FTP, unlimited SMB |
| <b>Original size width</b> | Up to 1,066 - 914 mm   |
| <b>Original thickness</b>  | Up to 16 mm, automatic thickness detection   |

## KIP 7.4 PRINT MANAGEMENT SOFTWARE

### SOFTWARE - STANDARD

|   |   |
|---|---|
| <b>KIP touchscreen</b>                  | Concurrent print- & scan-to-file, mono file-to-print, mono copying & scanning, system management                                    |
| <b>KIP printing applications</b>        | KIP Print, KIP Cloud Printing, KIP iView & iPrint, KIP PrintNet Web Printing, KIP Windows/AutoCAD Drivers, KIP touchscreen printing |
| <b>KIP Cost Review App/Track System</b> | PC-based application to review toner/service costs on the KIP 7100  |

### SOFTWARE - OPTIONAL

|   |   |
|---|---|
| <b>KIP PDF printing</b>                     | Support for PDF and PostScript levels 1, 2 & 3  |
| <b>KIP Colour Advanced Scan</b>             | Colour scan-to-file, direct scan to various destinations  |
| <b>KIP Colour Advanced Copy &amp; Print</b> | Support for Colour Copy & Print directly to Konica Minolta MFPs and a wide range of supported inkjet printers |
| <b>KIP Colour PRO</b>                       | Professional scan software for KIP 2300 scanner in dual footprint configurations                              |

## SYSTEM CONFIGURATION - STANDARD

|                                       |  |
|---------------------------------------|--|
| <b>4 roll network printing system</b> | Monochrome wide format printer   |
| <b>4 roll multifunction system</b>    | Monochrome wide format printer with mono / colour scanner - single footprint configuration |
| <b>4 roll production system</b>       | Monochrome wide format printer with mono / colour scanner - dual footprint configuration   |

## SYSTEM CONFIGURATIONS - OPTIONAL

|  |  |
|--|--|
| <b>Stacking systems</b>  | High capacity print tray, KIP 1200 Stacker                                 |
| <b>Folding systems</b>   | KIPFold 2000   |
| <b>Scanning systems for network printing system</b>                  | KIP 720 CIS colour scanner, KIP 2300 CCD colour scanner                    |
| <b>Scanner stands for dual footprint configurations</b>              | KIP 720 scanner stand, KIP 2300 scanner stand                              |
| <b>PC for optional scan software in dual footprint configuration</b> | Customer supplied PC* to install professional KIP Colour Pro scan software |

\* Minimum PC requirements: Quad Core Processor (Intel i5 or higher), Windows XP/7 (32/64-Bit), 8 GB RAM, 1 TB hard drive, 1 GIG RJ45 LAN port, DVD drive, one avail. USB 2.0 port, one PCI-e port, 20" flat monitor (with VESA - 75 or 100 patterns to be used in scanner stand)



[www.kip.com](http://www.kip.com)

KIP  
39575 W. 13 Mile Road  
Novi, MI. 48377  
USA



KONICA MINOLTA

[www.konicaminolta.eu](http://www.konicaminolta.eu)

Konica Minolta  
Business Solutions Europe GmbH  
Europaallee 17 · 30855 Langenhagen  
Germany

KIP is a registered trademark of the KIP Group. All other product names mentioned herein are trademarks of their respective companies. All product features and specifications are subject to change without notice. Complete product specifications are available upon request. © 2012