

KIP 3000



MULTIFUNCTION SIMPLICITY

**KIP**



## KIP 3000 MONOCHROME COPYING

The KIP 3000 monochrome copy system accurately reproduces technical documents at true 600 x 600 dpi resolution. Copies may be delivered to the integrated front stacker or directed to a rear KIP stacking system. Media capacity consists of one or two roll drawers, plus a manual bypass for single copies onto specialty media.

The KIP 3000 touch screen operator panel displays the graphical user interface used for all copying functions. An integrated authorization system may be activated to ensure operational security and accountability for each user, department and project. This system requires operators to enter a personal identification number before utilizing the KIP 3000.



## KIP 3000 MONOCHROME PRINTING

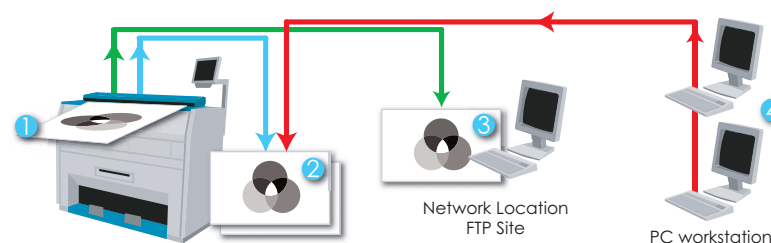
The KIP 3000 is a single solution for creating top quality, collated sets of monochrome documents. KIP High Definition Print Technology produces outstanding prints from the total range of technical documents, design drawings and graphical renderings.

KIP Image Processing Software (IPS) makes it easy to produce top quality prints from a wide range of file formats and design applications. The IPS suite delivers flexible operation including web-based & network printing, Windows and AutoCAD drivers, automated metering, remote system monitoring and simple user operation.



### Monochrome Document Workflow

- 1 Monochrome document is inserted into scanner to begin the copying or scanning process
- 2 KIP 3000 produces single copies or collated sets
- 3 Scanned images may be saved to the KIP 3000 IPS or automatically transmitted to a network location, FTP site or personal/project inbox
- 4 Monochrome print jobs are sent to the KIP 3000 via KIP PrintNET, KIP Request or using fully integrated application drivers



### MONOCHROME COPYING

- Touch screen operator panel provides one-touch access to all copying features
- Produce collated sets of an unlimited number of monochrome originals
- Real time preview provides operators with instant copy quality assurance
- Integrated authorization system requires operators to enter security information before copying

### MONOCHROME PRINTING

- KIP Image Processing Software provides web-based and internet printing and job queue management
- Windows and AutoCAD drivers allow operators to print from workstation applications
- Automatic recognition of a wide variety of raster and vector file formats
- Web-based and network users may be required to enter security information before printing

## KIP 3000 MONOCHROME SCANNING

The integrated KIP 3000 scanner delivers maximum digital imaging quality and performance while reducing the total system footprint. The system automatically senses the original document width and dynamically adjusts exposure settings during the scanning process for maximum image accuracy.

Documents containing lines, text, grayscales, renderings and aerial photographs are easily scanned into a variety of formats including single or multi-page PDF and DWF files. Once scanning is complete, the images are automatically delivered to the operator's choice of destination; network location, FTP site or personal/project inbox.



## KIP 3000 MONO/COLOR COPY & SCAN

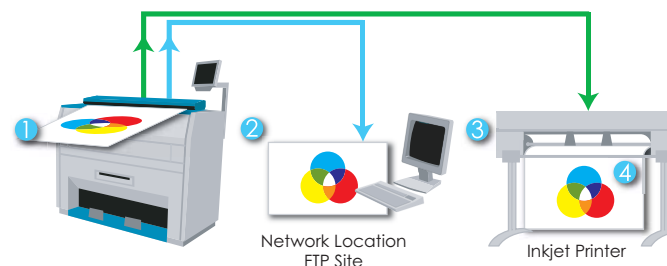
In addition to a full range of monochrome imaging features, the KIP 3000 may be used to create high resolution color scans and copies when configured with an inkjet printer. Based on true 600 dpi optical resolution and 24-bit color imaging technology, the KIP 3000 provides the capability to scan full color documents into a variety of file formats for use at PC workstations.

Fully integrated with a range of inkjet printers, the KIP 3000 delivers professional grade, high resolution copies from all types of color originals. A unique closed-loop color calibration system ensures quality copy accuracy based on the individual color capabilities and characteristics of each inkjet printer.



### Color Document Workflow

- 1 Color document is inserted into the integrated scanner to begin color copying or scanning process
- 2 Color scans may be saved to the KIP 3000 IPS or automatically transmitted to a network location, FTP site or personal/project inbox.
- 3 Single or multiple direct copies are produced by the inkjet printer
- 4 Unique closed loop calibration system ensures top quality color accuracy



### MONOCHROME SCANNING

- KIP 3000 delivers production scanning speeds up to 7.6" per second
- Scanned images are automatically delivered to a network location, FTP site or personal/project inbox
- Scan to a variety of file formats including single or multi-page PDF and DWF
- Real time image preview provides operators with instant scan quality assurance

### COLOR COPYING & SCANNING

- True 600 x 600 dpi resolution, 24-bit color copying and scanning technology provides outstanding results
- Automatic quality presets ensure top quality copies and scans with minimal operator effort
- Unique KIP closed loop color calibration system ensures maximum color copy accuracy
- Fully integrated system design eliminates the need for additional PCs

# KIP 3000 IMAGE PROCESSING SYSTEM



## KIP IPS

The KIP Image Processing System is a combination of processing power and flexible software applications designed for maximum productivity and ease-of-use. Applications are available on PC workstations, over the internet and at the KIP 3000 touch screen operator panel, providing a uniform user interface across the entire KIP digital product range. All applications have been designed to provide exceptional versatility, fast file processing and efficient use of network resources to maintain high productivity.

## Easy Administration

In addition to the thoughtfully designed interface, users and administrators benefit from an array of sophisticated but easy-to-use queue management and accounting tools - all designed to meet today's most challenging network security demands.

## Automated Metering System

All KIP printing, copying, and scanning applications are connected via an integrated system designed to record and account for use of all system functions. Customizable reports detailing total system usage are delivered via E-mail on demand or at designated weekly or monthly intervals.

### KIP IMAGE PROCESSING SYSTEM

- Touch screen operator panel provides all copying, scanning and printing functions
- Integrated accounting system
- Easy to use touch screen operator interface
- Powerful file processing for maximum productivity

### SYSTEM ADMINISTRATION

- Change priority, edit or delete copy and print jobs
- Manage queue via network, internet or the KIP 3000 operator panel
- Apply security settings for individual users
- Receive E-mail confirmations of remote print job transmissions

### AUTOMATED METERING

- Receive automatic production reports via E-mail
- Compare system usage on a monthly basis
- Track all copying, scanning and network printing from KIP Request, KIP PrintNET, Windows and AutoCAD Drivers
- Track all printing over Windows, Apple, Novell and Unix/Linux networks



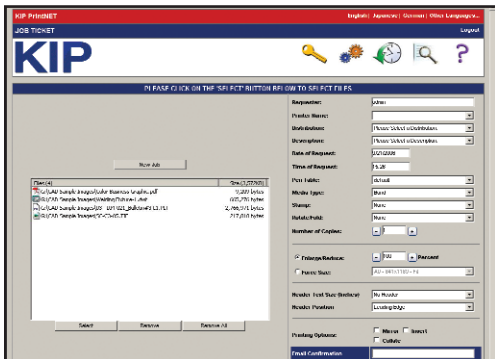
# KIP 3000 WEB PRINTING

## KIP PrintNET

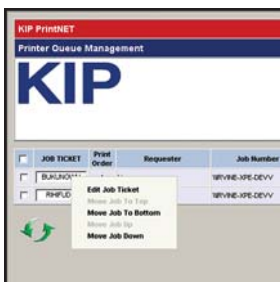
KIP PrintNET is a powerful web-based utility that provides users with the benefits of versatile printing, job queue management and system administration features without the need to install any software applications on network PCs. Users may select and send single or multiple files to KIP digital systems connected to the local network or available to internet users. Due to a similar graphical interface and feature set, users of KIP Request software will be instantly familiar with the operation of KIP PrintNET, providing a seamless transition between online and offline operations.

## Remote System Administration

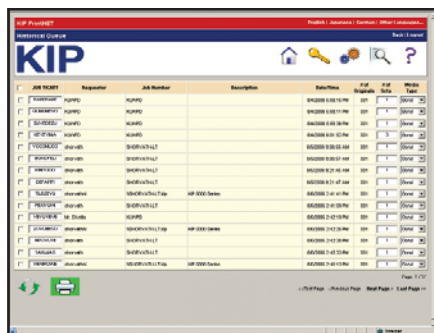
An E-mail notification system may be activated, which delivers print job receipts to users after each successful job transmission. In the event that the KIP 3000 paper or toner supply is depleted, designated users may have automatic E-mail alerts sent to their choice of PC, laptop, PDA or cell phone! In addition, KIP PrintNET generates customizable E-mail reports detailing all KIP 3000 system usage on demand or at preset intervals. These reports contain data compatible with spreadsheet applications for easy customization and analysis.



Create jobs with KIP PrintNET



Reprioritize and remove print jobs with the menu-driven queue manager



KIP PrintNET queue management

### JOB CREATION

- Create print jobs from all standard Windows, Apple, Novell and Unix/Linux based web browsers
- File selection area allows users to create jobs comprised of single or multiple files
- Recall, edit and reprint previous copy or network print jobs
- Apply basic and advanced settings to web-based print jobs

### QUEUE MANAGEMENT

- Manage job queue remotely with standard web browsers via the network or internet
- Reorder and modify print jobs and priorities
- Remove single or multiple copy or network print jobs from the queue
- View KIP 3000 system status and media information

### SYSTEM ADMINISTRATION

- Username and password security system
- E-mail notification can be sent to users upon print job receipt
- Configure printer settings such as image adjustments, media types and print density
- Queue management and system setting adjustments are restricted to administrator use

# KIP 3000 NETWORK PRINTING

## KIP Request

KIP Request network printing software is an easy to use printing application designed to provide network users with a fast and accurate means of producing high quality prints from all types of file formats.

Every aspect of KIP Request is centered around efficient workflow, providing complete command of a host of powerful printing and print management features. Users may preview print jobs, make image adjustments, set document folding parameters, enter accounting data, manage the print queue and send files to various KIP printers on the network via a single interface.

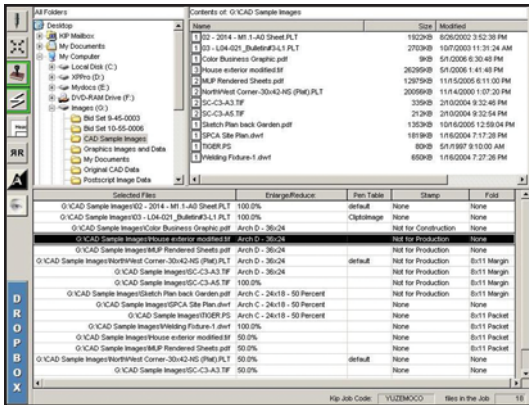
KIP Request software makes network printing all that it should be - simple, convenient and highly productive.

## Printing Versatility

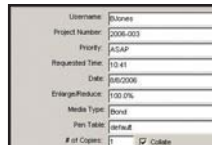
KIP Request makes it easy to produce top quality prints from all types of file formats. The DWF format from Autodesk is a standard supported format, in addition to most other raster and vector file types. In addition, the KIP 3000 may be configured to efficiently turn complex PDF and Postscript files into wide format prints.



KIP Request user interface



KIP Request file selection



User accounting data entry



Preview, pan and zoom images

## DIGITAL PRINTING

- All printing software and application drivers are included with the KIP 3000 system
- Collate, stamp, fold and scale digital files
- Pre-flight file viewing, zooming and panning
- Recall, edit and reprint previous copy or network print jobs

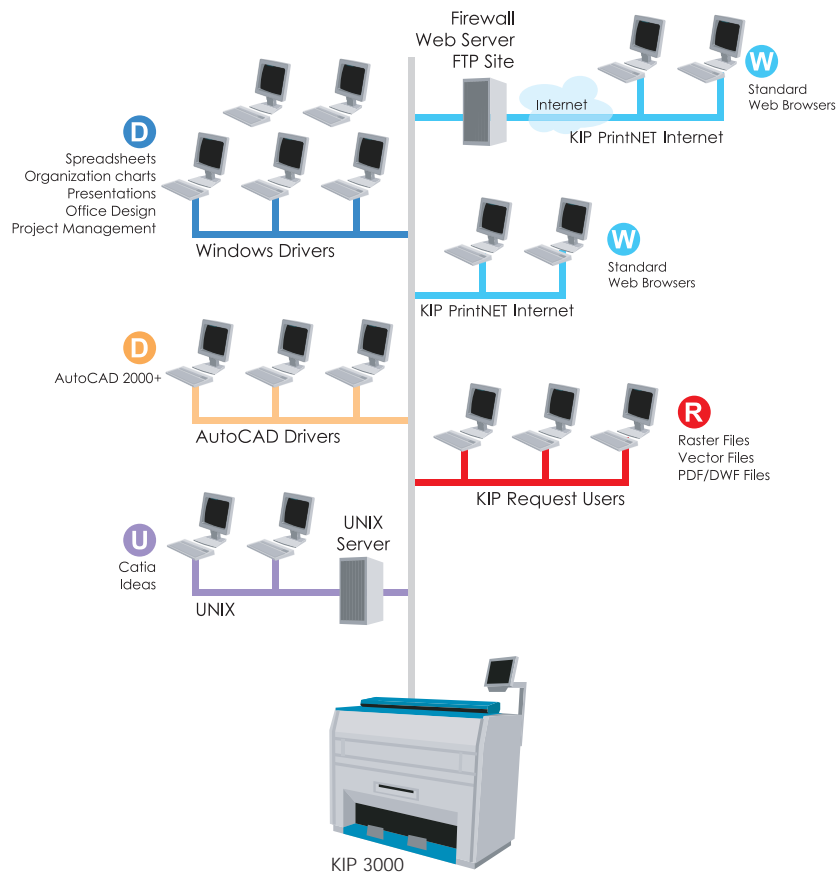
## COMPLETE PRINT CONTROL

- Require operators to enter username, password and accounting information prior to printing
- Apply stamping, pen preferences, fold parameters and enlargement/reduction settings to individual files in a set
- Individual controls for raster and vector data printing preferences
- Designate a specific date and time for printing of each job

## FORMAT VERSATILITY

- Auto file format detection eliminates error
- Create print jobs from any combination of file types
- Vector format support: DWF, HPGL, HPGL/2, HP-RTL, 906/907, Postscript
- Raster format support: TIF, PDF, JPEG, CALS

# KIP 3000 PRINTING APPLICATIONS



## KIP Print Drivers

The KIP Windows driver supports Windows® printing features including set collation, fast spooling for multiple copies or sets, data tracking for job accounting and media selection.

The KIP AutoCAD driver offers unique data tracking by username and job number. To assist in making printing decisions, two-way printer status allows users to view roll and media information.

## Get Connected

The integrated KIP 3000 IPS utilizes standard TCP/IP networking protocol for reliable and flexible network connectivity. The KIP 3000 can produce prints from virtually any type of application and network environment.

- W** KIP PrintNET is a web-based printing utility compatible with standard web browsers which shares a similar interface with KIP Request software.
- R** KIP Request is an easy-to-use application that provides remote users with an efficient method of printing single documents or collated sets through the network.
- D** KIP AutoCAD drivers enable printing directly from AutoCAD® technical design applications.
- D** The KIP Windows driver enables printing directly from all types of Windows® based applications.
- U** Standard TCP/IP connectivity ensures easy integration with Windows, Apple, Novell and Unix/Linux based software applications.

### KIP APPLICATIONS DRIVERS

- Windows driver compatible with 2000, 2003, XP and 64-bit
- AutoCAD driver compatible with versions 2000 and up
- Drivers are fully integrated with KIP IPS software suite for user preferences and accounting data integration
- Drivers display KIP 3000 system status including media information, toner levels and meter counts

### PRINTING VERSATILITY

- Spreadsheets, organizational charts, and project management
- Word processing, business graphics and presentations
- CAD design and mechanical engineering information
- PDF and DWF documents with raster and vector data

### NETWORK CONNECTIVITY

- Communicate with workstations, print servers, switching equipment, hubs and other network capable devices.
- Windows network connectivity via TCP/IP protocol
- Unix/Linux and Novell network connectivity spooled through LPR/LPD
- Apple network connectivity via LPR/LPD

# KIP 3000 MONOCHROME COPYING & SCANNING



KIP 3000 monochrome copy interface

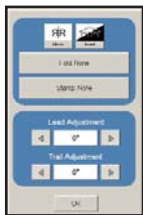
The KIP 3000 incorporates the latest in document imaging technology to create accurate, high quality copies and digital image files. The KIP 3000 captures a full 36" wide image area, making it ideal for the full range of technical drawings, graphic renderings, maps and photographs. A range of preset quality controls are available to assist operators with making proper scanning and copying selections.

## Monochrome Copying

The KIP 3000 accurately reproduces collated sets of an unlimited number of originals at 600 dpi resolution. Copies may be conveniently delivered to the integrated front stacking tray, or directed to a rear KIP stacking system.

## Monochrome Scanning

The KIP 3000 performs the full range of scanning applications without the need for any additional PC, delivering maximum value while reducing the overall system footprint. Documents can be scanned to a variety of formats, including single or multi-page PDF and DWF files. After scanning is completed, images are automatically delivered to the operator's choice of a network or FTP destination.



Advanced options



Copy quality controls



Real-time copy & scan preview screen

## MONOCHROME COPYING

- Collated sets copying of unlimited originals
- Automatic image quality settings
- Real-time copy preview for quality control
- Feed next copy job while current job is printing

## MONOCHROME SCANNING

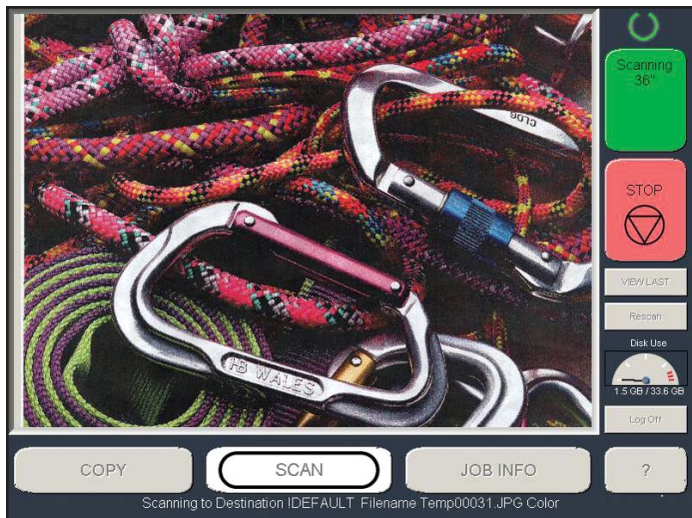
- Monochrome scan speed up to 7.6" per second
- Scan-to-file while simultaneously printing or copying
- Real-time image preview for quality control
- Scan to a variety of file formats, including PDF, TIF, DWF and CALS

## SPACE SAVING DESIGN

- Single footprint system configuration for all monochrome and color scanning applications
- No additional PC or PC components required
- Integrated operator authorization system
- Save image files to the KIP 3000 IPS, network server, operator PC, FTP site or project/personal inbox



# KIP 3000 COLOR COPYING & SCANNING



KIP 3000 full color image view

Based on true 600 dpi optical resolution and 24-bit color imaging technology, the KIP 3000 provides the capability to reproduce the total range of wide format color communications.

## Color Copying

A unique KIP "closed loop" color calibration system delivers outstanding copy and scan color accuracy. Color accuracy is determined through a closed loop system which includes the KIP 3000, an inkjet printer with its associated inks and a specific media type.



Operators may designate their choice of single or multiple color copies using draft, normal or high quality modes to get the right results the first time!

## Color Scanning

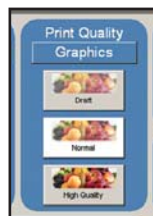
The integrated color scanning menu at the KIP 3000 touch screen operator panel presents users with preset scan quality controls to easily accommodate a wide range of original types. The system scans color technical documents, maps, posters, graphics and photos into a variety of file formats appropriate for E-mail, archive and printing purposes. In addition, a scanned image view at the touch screen operator panel provides instant quality assurance.



KIP 3000 color copy interface



Original type selection



Copy quality controls

## COLOR COPYING

- High resolution, 24-bit color copying technology
- Automatic copy quality presets for easy operation
- Preset original type and copy quality selection
- Select number of copies and image size

## COLOR SCANNING

- Color scan speed up to 2.6" per second
- 600 x 600 dpi with 24-bit color depth
- Scan to network location as TIF, PDF or Email-ready JPEG
- Fully integrated design with no additional PC required

## COMPLETE SYSTEMS INTEGRATION

- Full integration with a wide range of inkjet printers
- Closed-loop KIP color calibration system
- Easily connect KIP 3000 and inkjet printer via IP address
- Automatic copy quality based on the individual color capabilities of each inkjet printer

# KIP 3000 FOLDING AND FINISHING SYSTEM

## KIPFold 3000 Packet Standards

### ARCHITECTURAL PRINT SIZES:

12" x 18", 18" x 24", 24" x 36", 36" x 48", 30" x 42"

### ENGINEERING PRINT SIZES:

11" x 17", 17" x 22", 22" x 34", 34" x 44"

### METRIC PRINT SIZES:

A3 - A0

### PACKET SIZES:

8.5" x 11", 9" x 12" or 210mm x 297mm

### MARGIN:

0" - 2", 0 - 50mm user selectable

### PACKET ORIENTATION:

Portrait or Landscape (Arch., Eng.) Portrait (Metric)



*The ability to specify landscape or portrait packet orientation provides operators with expanded flexibility*



KIP 200 Stacker



KIP 300 Stacker

## KIPFold 3000

The KIPFold 3000 system automates document finishing requirements by providing folding, stacking and collation in a compact design. The system intelligently communicates with the KIP 3000 IPS and is fully integrated with all KIP copying and printing applications and drivers to provide seamless workflow integration.



## Fold Types

The KIPFold 3000 provides the flexibility to fold copies and prints into all architectural, engineering and metric standard packet sizes. Prints are accepted in either landscape or portrait format, allowing for fast and efficient folding operations. In addition, users may specify individual packet orientation - landscape or portrait.

## KIP Stacking Solutions

The KIP 3000 is compatible with a range of stacking solutions designed to deliver print output just the way you want it. Consistent, accurate and reliable KIP stackers deliver maximum document control with minimum effort. From simple print catchers to intelligent online stacking systems, KIP solutions can be easily tailored to suit your exact needs, while maintaining the flexibility to grow as demands increase.

### FOLD 3000 SYSTEM

- Fully integrated with KIP Image Processing Software suite
- Precise document folding
- Ultra-quiet operation
- Compact footprint

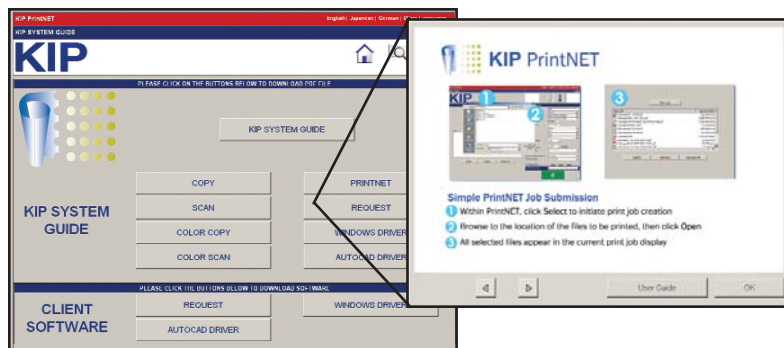
### FOLD TYPES

- Delivers all architectural, engineering and metric fold packet size standards
- Efficient folding and stacking of up to 100 documents
- Select landscape or portrait output for each packet
- Selectable margin size up to 2"

### STACKERS

- KIP 300 online Stacker: Autosort, Stacks 350 A-E size prints
- Intelligent, online system communication with KIP 3000
- KIP 200 offline Stacker: Stacks 250 A-E size prints
- Consistent, accurate and reliable stacking systems

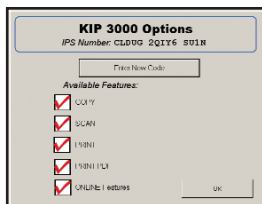
# KIP 3000 SYSTEM OPERATION



Downloadable KIP System Guides, application software and drivers



Illustrated operator guides at KIP IPS



Instant keycode upgrades

## KIP System Guides

A KIP System Guide is available at the KIP 3000 operator panel to provide a quick reference resource for all KIP 3000 and KIP IPS Software features. This guide is also available for download via KIP PrintNET.

In addition to the System Guide, KIP software and application drivers are available for immediate download by users via KIP PrintNET. Dependent on system security settings all selected software and drivers can be transferred to the network workstation PC.

## Operator Guides

The KIP 3000 operator panel provides users with illustrated guides to explain all major monochrome & color copy and scan-to-file features and functions. In addition, step-by-step media and toner replacement procedures are automatically displayed when necessary to provide operators with system instructions.

## System Configurations

- Monochrome Copy System
- Mono Copy & Print System
- Mono Copy, Print & Scan System
- Mono/Color Copy, Print & Scan System

## System Upgrades

All KIP 3000 configurations are available as one or two roll systems. Each configuration may be easily field upgraded to provide new system features at any time.

### COPY SYSTEM

	Standard	Optional
Mono Copy	■	
Folding		■

### COPY & PRINT SYSTEM

	Standard	Optional
Mono Copy	■	
Mono Printing	■	
PDF Printing		■
Folding		■

### COPY, PRINT & SCAN SYSTEM

	Standard	Optional
Mono Copy	■	
Mono Printing	■	
Mono Scan	■	
PDF Printing		■
Folding		■

### MONO/COLOR COPY, PRINT & SCAN SYSTEM

	Standard	Optional
Mono Copy	■	
Mono Printing	■	
Mono Scan	■	
Color Copy & Scan	■	
PDF Printing		■
Folding		■

## KIP 3000 SERIES SPECIFICATIONS

### CONFIGURATION:

Console - Single Footprint

### PRINTING METHOD:

LED Array Electro-Photography

### PHOTORECEPTOR:

Organic Photoconductive Drum

### PRINT SPEED:

4 'D' size per minute

### RESOLUTION:

600 x 600 dpi

### MEDIA SIZE:

Maximum Print Width: 36"

Minimum Print Width: 11"

### MEDIA WEIGHT:

Plain paper: 18 - 24lb

Tracing paper: 18 - 20lb

Film: 3.5 - 4 mil

### WARM UP TIME :

Instant from standby

### FIRST PRINT TIME:

24 seconds

### FUSING METHOD:

Heat - pressure

### DEVELOPMENT METHOD:

Dry, non-magnetic mono-component toner

### INPUT POWER:

120V +6% or -10%, 50/60Hz, 15A

### DIMENSIONS:

49"(W) x 24"(D) x 44"(H)

### WEIGHT:

430 Lbs. (1 roll), 440 Lbs. (2 roll)

### ENVIRONMENTAL RATING:

ENERGY STAR® Qualified

### PRINT LANGUAGES:

Supported data formats include:

- DWF
- PDF
- TIF Group 4, Cals Group 4, Government C4, Intergraph CIT/TG4, IBM IOCA, JPG, Uncompressed Grayscale TIF, Uncompressed Color TIF
- Postscript Level 3
- HPGL, HPGL/2, Calcomp 906/907, CGM, HP-RTL

### KIP APPLICATIONS AND DRIVERS:

- KIP Request provides an efficient method of reviewing and sending single files or collated sets for printing.
- KIP Driver Pack includes Windows and AutoCAD Drivers to enable printing from supported applications.
- KIP PrintNET is a web-based print utility compatible with standard web browsers.

### APPLICATION PROGRAMMING INTERFACE:

- Allows third party applications direct access for printing via an open ASCII job ticket
- Provides direct access for third party application programmers to build project management software and imaging databases



### KIP AMERICA

Phone: (800) 252-6793

E-mail: [info@kipamerica.com](mailto:info@kipamerica.com)

Website: [www.kipamerica.com](http://www.kipamerica.com)

### KIP CANADA

Phone: (800) 653-7552

E-mail: [info@kipcanada.com](mailto:info@kipcanada.com)

Website: [www.kipcanada.com](http://www.kipcanada.com)

AutoCAD and DWF are registered trademarks of Autodesk Inc. Windows is a registered trademark of Microsoft. KIP, KIP 3000, KIP Request and KIP PrintNET are registered trademarks of KIP. All other product names mentioned herein are trademarks of their respective companies. All specifications are subject to change without notice.