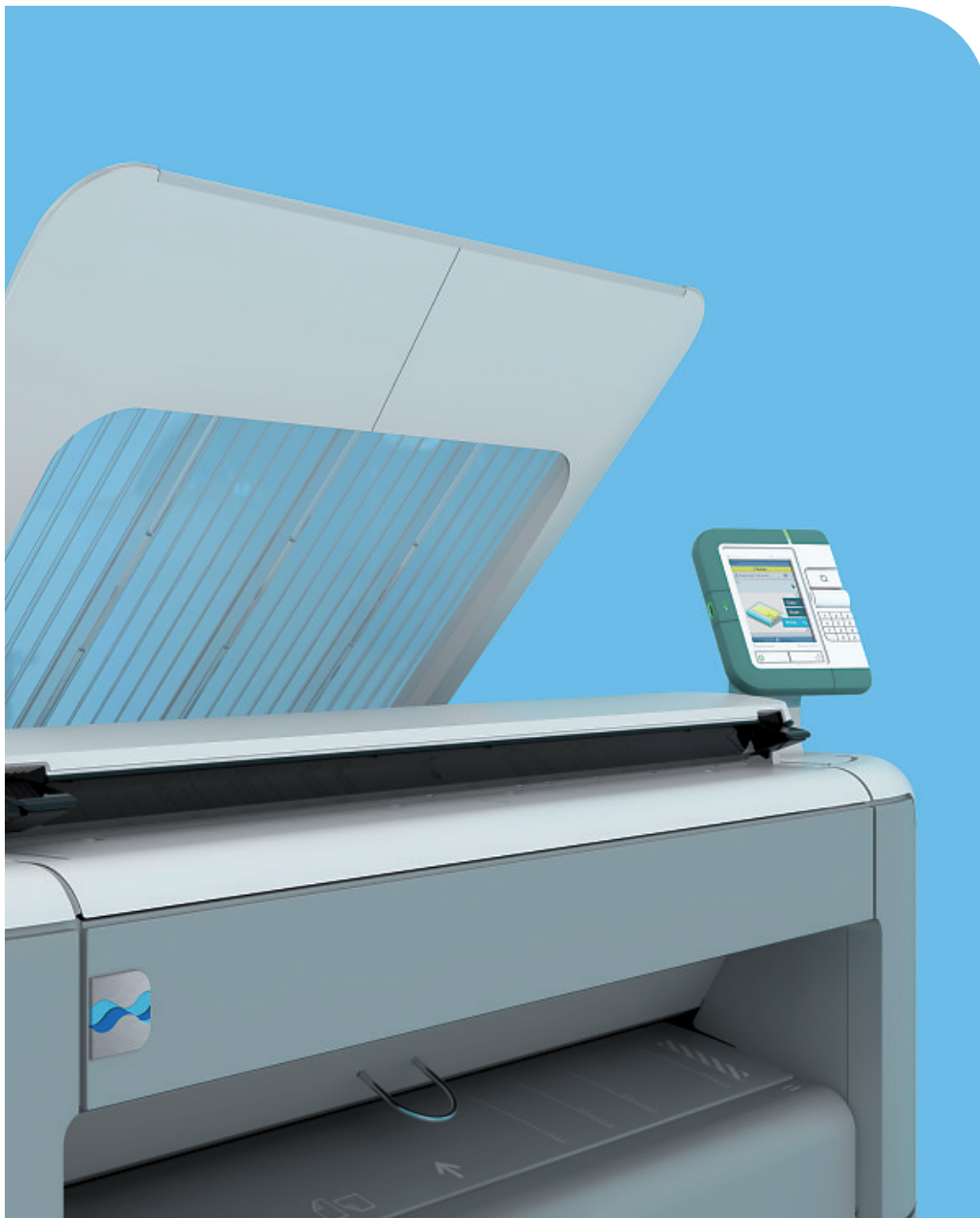




Océ
PlotWave® 350
printing system

Print The Way You
Want



Canon
CANON GROUP

Mobile, fast and
reliable large format
printing

- Work more flexibly: print from anywhere
- Print up to 6 A1 plots per minute without long delays
- Use the Océ Windows Printer Driver 2 for first-time-right printing
- The reliable way to cut costs and build profits

Print The Way You Want

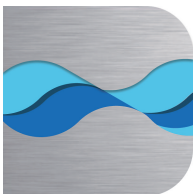


Océ PlotWave 350 printing system

Mobile, fast and reliable large format printing



Get more options to print the way you want, wherever you are, with the Océ PlotWave 350 printing system. Designed to meet the needs of technical professionals on the go. This system is the next wave in mobility, speed and reliability for printing, copying and scanning technical documents. It builds on the award-winning success of the Océ PlotWave 300 printer. Enhanced with exciting new features to keep your business moving ahead.



The Next Wave in...

- **Speed:** prints 50% faster than its predecessor
- **Energy efficiency:** from sleep mode to print in hand in only 40 seconds
- **Quality:** gray tone optimization boosts the print quality
- **Flexibility:** print from mobile devices via a WiFi router
- **Waste reduction:** intuitive new Océ Windows Printer Driver 2 for first-time-right printing
- **Reliability:** exiting new features to enhance performance

Océ PlotWave 350 printing system

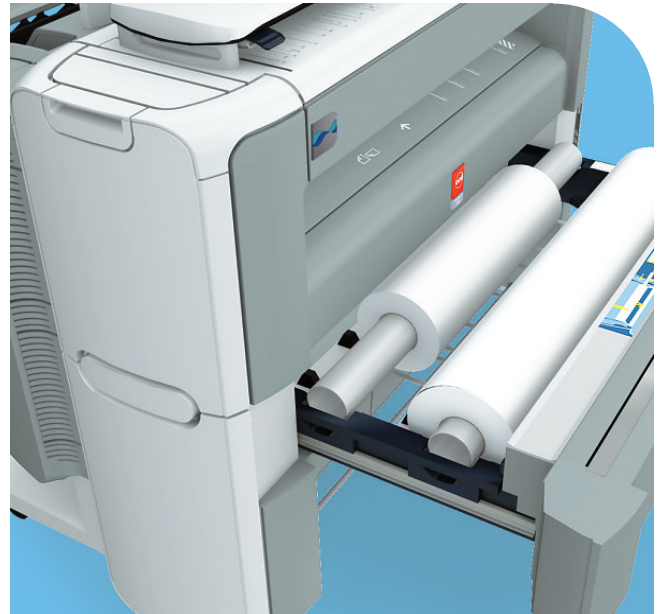
Work more flexibly: print from anywhere

If you have access to a WiFi router in your network, you can use a smart phone or computer to retrieve technical files from a cloud or send a print request to your printer via Océ Mobile WebTools.

You can print and retrieve scanned documents with Océ Mobile WebTools or a USB mass storage device. Or you can use Océ Publisher Select to submit complex print jobs.

Print up to 6 A1 plots per minute without long delays

Say goodbye to printing delays. Now you can print up to 6 A1 plots in one minute, with virtually no warm-up time. From sleep mode to print in hand in only 40 seconds. Compared to a slow four minutes with conventional printers, this easily saves you an hour a day. No trade-off between energy consumption and getting a fast first print, thanks to the energy efficient Océ Radiant Fusing technology.





1 Mobile green button printing

The new Océ Mobile WebTools allow you to access scans and submit print jobs using a mobile device. The efficient scroll and click user interface with dynamic buttons supports a USB flash drive for convenient printing and scanning.

2 Neat document delivery

The air separation technology guarantees that up to 50 A0 / E-size plots are neatly collated and stacked on the top delivery tray. The optional front original tray keeps originals clean. No extra space required for a large receiving table. The optional Océ 2400 fanfold generates quality folded documents automatically, so you can keep your desk clean and organized.

3 Superior color scanning with Océ Color Image Logic®

This technology automatically compensates for wrinkles and light colors to produce superior results. Originals are inserted face-up and the paper width is detected automatically.

4 Energy efficient Océ Radiant Fusing technology for fast printing

Océ Radiant Fusing technology provides instant start-up and uses half the energy of comparable systems. The printer only uses energy when printing. When the system is in idle mode, it stays cold and uses almost no energy.

5 Automatic roll changing

Reduces physical strain and effort. Simply place the roll on the built-in roll loading station. Paper is fed into the printer and cut and sized - completely automatically.

6 Reliable performance

High resolution Pico Printing at 600 x 1200 dpi improves the print quality dramatically. The system is constructed of hard wearing materials that have a long productive lifetime.

7 Refill toner, clean and easy

Completely closed toner system is easy to reach. It keeps toner inside the printer and off hands and clothes. Bottles are designed to be handled and stored easily.

Use the Océ Windows Printer Driver 2 for first-time-right printing

The fresh, straightforward new user interface helps you to print complex drawings more easily and correctly the first time. Simply click the print key and select the Océ Windows Printer Driver.

It includes a What You See is What You Print preview that clearly highlights potential errors if settings are not correct. Like misplaced fold lines or an error in the size of the document. Just correct your settings and click the print key.

The reliable way to cut costs and build profits

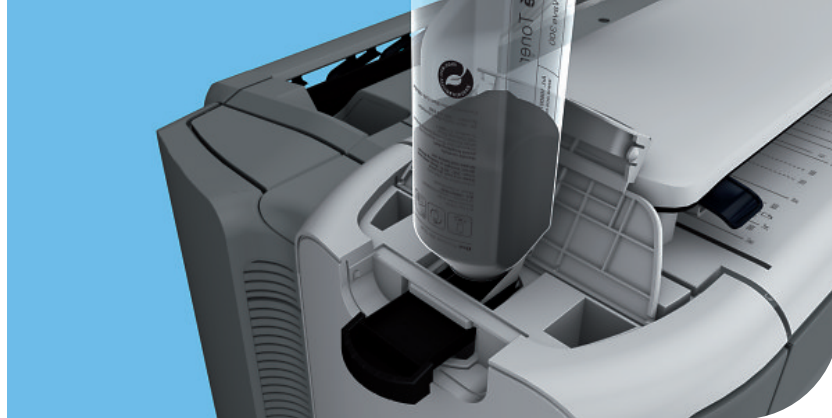
With over 50 new components and a speed increase of 50%, this system provides even better performance. The new gray tone optimization boosts the print quality as well.

Operational costs are kept low with the hard working construction that outlasts many comparable systems. Critical components are completely enclosed to reduce wear and tear. Reinforced materials extend the system's lifetime and withstand intensive walk-up usage.



Technology
Description
Imaging technology
Toner
Speed
Resolution
General
Configuration
Warm-up time
First print time
Size main engine (WxDxH)
Weight main engine
Certifications
Paper handling
Paper rolls
Maximum paper capacity
Paper weight
Roll width
Roll length
Output delivery
Media type (www.mediaguide.oce.com)
Controller
Description
Client operating system support
Memory
Hard disk
Interface
Page description language
Protocols
Security
Options

Black & white all-in-one wide format print/copy/scan system with color scanner
Electrophotography (LED), organic photoconductor (OPC), clean closed toner system, Océ Radiant Fusing
Océ black toner: 0.4 kg per bottle
3.1 ppm (Ao); 5.9 ppm (A1); 6.2 ppm (D-size)
600 x 1200 dpi
Multifunctional
Less than 1 second, thanks to Océ Radiant Fusing technology
31 seconds (A1 / D-size)
From sleep mode: 40 seconds (A1 / D-size)
152.7 x 80 x 149.5 cm; 60.1 x 31.5 x 58.9" (including top delivery tray)
180 kg; 397 lbs
EPA ENERGY STAR®, FEMP, TüV GS, CETECOM, CE, UL, cUL, CB, FCC Class A, RoHS
1 or 2 rolls
400 m, 200 m per roll; 1300 ft, 650 ft on a roll
60 - 110 g/m²; 16 - 28 lb
297 - 914 mm; 11" - 36"
420 mm - 176 m; 16.5" - 577.4 ft
Top delivery tray with air separation technology; up to 50 Ao / E-size plots collated
Paper: Plain paper, Transparencies, Recycled paper, Colored paperPlain paper, Transparencies, Recycled paper, Colored paper
Film: Polyester, Antistatic, Contrast
Océ PowerM® controller with Windows® XP Embedded
Windows XP / Vista / 7 (32- / 64-bit) / Server 2003 / Server 2008, Terminal Server, Citrix® MetaFrame and Presentation Server, Mac® OS X (only Adobe® PostScript® 3/PDF driver supported)
1 GB
160 GB
Ethernet 100 Mbit/s, 1 Gbit/s
HP-GL, HP-GL/2, TIFF, JPEG, DWF, CALS, NIFF, NIRS, ASCII, C4, Calcomp 906/907/951
Option: Adobe PostScript 3/PDF
Network: TCP/IP (IPv4, IPv6), IPSec, SNMP
Printing: LPR, NDPS®, FTP
Scanning: FTP, SMB
E-shredding, IPSec
Adobe PostScript 3/PDF file interpreter



Scanner	
Description	
Scan resolution	
Scan speed	
Scan format	
Scan destination	
Original width	
Original length	
Original thickness	
Zoom	
Preset modes	
Size scanner (WxDxH)	
Weight scanner	
Environmental	
Sound power level	
Ozone emissions	
Power requirements	
Power consumption	
Recyclability	
Workflow	
Description	
Printer drivers	
Job submission	
Job management	
Accounting	
Templates	
Options	
Hardware	
Software	

Contact Image Sensor (CIS) with Océ Color Image Logic technology
600 - 600 dpi
Copying: 7 m/min; 23 ft/min Black & white scanning: 11.7 m/min; 38.4 ft/min Color scanning: 3.9 m/min; 12.8 ft/min
TIFF, PDF, PDF/A, JPEG, CALS, multi-page PDF, multi-page PDF/A and multi-page TIFF
Local USB flash drive, FTP, SMB, Controller, mobile device via Océ Mobile WebTools
208 - 965 mm; 8.2" - 38"
208 mm - 16 m; 8.2" - 52.5 ft
Maximum 0.8 mm; 0.03" (non-rigid documents)
Scale to standard format Custom: 10 - 1000 %
Lines & text, Lines & text draft, Folded lines & text, Photo, Colored, Dark original, Blueprint
109.7 x 30.8 x 14 cm; 43 x 12 x 5.5"
24.5 kg; 54 lbs
Standby mode: maximum 26 dB Print mode: maximum 58 dB
0.001 mg/m ³
100 - 120 V, 200 - 240 V (3 phases); 50/60 Hz; 20 - 10 A
Sleep mode: 41 W (115 V / 60 Hz: 39 W) Standby mode: 88 W (115 V / 60 Hz: 92 W) Print mode: 1.4 kW (115 V / 60 Hz: 1.5 kW) Per print: 45 Wh/Ao (EPA ENERGY STAR TEC method)
Hardware: made of steel or highly recyclable plastics: up to 95% of the engine can either be upcycled or recycled. Remaining 5% are non toxic waste. Toner: bottles made of highly recyclable HDPE (High Density Polyethylene)
Concurrent print, copy and scan of single documents or sets
Océ Windows Printer Driver , Océ PostScript 3 driver
Océ Publisher Express, Océ Publisher Select Océ Mobile WebTools for iOS, Android, Symbian and BlackBerry®
Print and history queue, Smart inbox, Manage queue, Océ Express WebTools, Secure controller access, remote shutdown and restart.
Option: Océ Account Center
4 copy templates, 4 scan templates
Océ Scanner Express, Additional roll unit, Front original tray, Océ 2400 fanfold
Océ View Station Océ Repro Desk® Studio, Océ Repro Desk Web Client, Océ Repro Desk Select, Océ Repro Desk Professional, Océ Client Tools

Beyond the Ordinary



Printing for Professionals

Creating global leadership in printing

Canon and Océ have joined forces to create the global leader in the printing industry. Our customers can choose from one of the industry's broadest range of products backed by best-in-class service and support organizations. Look to the new Canon-Océ combination for:

- Enterprise printing in the office and corporate printroom
- Large format printing of technical documentation, signage, and display graphics
- Production printing for marketing service bureaus and graphic arts
- Business Services for document process outsourcing

© 2012 Océ.

Illustrations and specifications do not necessarily apply to products and services offered in each local market. Technical specifications are subject to change without prior notice.

Océ, Océ PlotWave, Océ Power Logic, Océ Image Logic and Océ Repro Desk are registered trademarks of Océ Technologies B.V. Adobe and PostScript are registered trademarks of Adobe Systems Incorporated. Citrix is a trademark of Citrix Systems, Inc. and/or one or more of its subsidiaries, and may be registered in the United States Patent and Trademark Office and in other countries. Mac is a registered trademark of Apple Computer, Inc. Windows is a registered trademark of the Microsoft Corporation in the United States and/or other countries. ENERGY STAR is a registered trademark of the U.S. Environmental Protection Agency (EPA). All other trademarks are the property of their respective owners.

