

Canon

CANON SOLUTIONS AMERICA



CANON SEE IMPOSSIBLE



VERSATILE
WORKHORSE

EFFORTLESS
OPERATION

PRODUCTIVE FINISHING
AND SCANNING

RELIABLE
PERFORMANCE

SUSTAINABILITY
SECURE

SHORT RUNS OF
MONOCHROME AND COLOR

TIME-SAVING
WORKFLOW

OCÉ COLORWAVE® 700 PRINTING SYSTEM

Versatile and productive large format color systems



OCÉ COLORWAVE 700
PRINTING SYSTEM



A CANON COMPANY

OCÉ COLORWAVE 700 PRINTING SYSTEM

- A productive, full-color large format solution
- Media flexibility for versatile application offerings
- Increase your efficiency with multiple finishing options
- Sustainable and secure investment



Versatile and productive large format color system

Advance your business with the highly versatile and productive Océ ColorWave 700 large format printing system. Make efficient use of space by using one system for a wide range of graphics applications, as well as CAD and GIS documents. Ideal for central printrooms and reprographers that want to offer new large format services, like posters, pop-up banners, artistic canvas, wallpaper, and more with the new versatile Océ MediaSense technology. A cost efficient way for print service providers and retailers to produce short-run full color graphic applications more economically with little preparation time or complex finishing.

Unlike other large format printing systems, the Océ ColorWave 700 printer allows you to print on thicker media giving you the ability to grow your application offerings for a faster return on investment and to better serve your customers.

Like other members of the Océ large format family, this printer works just like a tablet thanks to the Océ ClearConnect multi-touch user interface. That means little to no training for your staff and the ability to print on your way to your next meeting or from the job-site. Keep work moving even when you can't get to the printer with the versatile Océ ClearConnect communication connections.

A productive, full-color large format solution

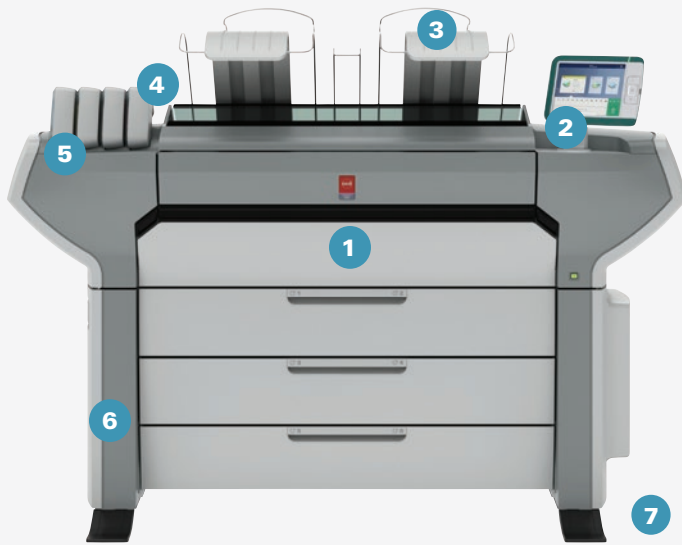
You can print, copy, and scan at the same time with the integrated controller without sacrificing productivity or quality. This system easily processes large complex files at a speed of 1,389 square feet per hour.

The Océ ClearConnect software suite gives you more flexible ways to submit files to the printer. Print from a desktop via Océ Publisher Select™ software to manage complex document sets. Print from the cloud or a mobile device via WiFi to have prints available more quickly. Optional ONYX Thrive™ software provides preflighting and advanced color management tools to ensure superior color results and high productivity.

Media flexibility for versatile application offerings

The Océ ColorWave 700 printer is the flexible choice. Expand your services cost-effectively with Océ MediaSense technology's ability to print on thicker media (up to 32 mil). This is ideal for posters, pop-up banners, disposable point-of-sale, canvas, wallpaper, and many more. You can also print productive short runs on low-cost uncoated bond or a variety of specialty media to meet customer demands.

The Océ patented Océ CrystalPoint® technology ensures robust, waterfast prints with sharp lines, high readability of fine details, and smooth, even area fills. The high-quality prints, which are consistent over time and on different machines, have a unique silk-shine look and feel, independent of the type of media you use. The ONYX® workflow software helps you to meet customers' demands. The embedded Adobe PDF Print Engine controller/RIP eliminates the need for an external RIP for standard work. Use the ONYX workflow software when you need to match specific color or for streamlining special production workflow.



1 PRODUCTIVE AND VERSATILE PRINTER

Produce a wealth of applications. The productivity, reliability, and high print quality makes this system perfect for a production environment. With Océ MediaSense technology, this system supports media up to 32 mil, increasing your application range significantly.

2 EFFORTLESS OPERATION WITH THE OCÉ CLEARCONNECT PANEL

The Océ ClearConnect panel works like a tablet. Easily control the printer with your fingertips using simple and familiar screen movements. Check that documents are correctly positioned using the live preview to avoid errors.

3 PRODUCTIVE FINISHING AND SCANNING

Print, copy, and scan at the same with the powerful Océ PowerSync controller. Scan to the cloud, your USB flash drive or as a hard copy. The Océ Top Delivery Tray

can stack up to 75 D-size prints, no separate table required. You can also choose the Océ Delivery Tray for added stacking capabilities and save time with the Estefold folding options.

4 RELIABLE PERFORMANCE

Patented Océ CrystalPoint technology ensures robust, waterfast prints with sharp lines, high readability of fine details and smooth area fills. High-quality, consistent prints have a unique silk-shine look and feel, independent of the media used.

5 SUSTAINABLE AND SECURE SYSTEM

With Océ CrystalPoint technology, you have the ability to print on recycled medias with high-quality results. The unit emits no ozone, dust or odor. The system is constructed of durable and solid parts and designed to be recycled and re-used.

6 FAST RETURN ON INVESTMENT

Save costly labor hours, like preparation time by printing different file types directly without opening their applications. Save manual trimming time with the automatic cutter. Save further time loading rolls with the 6-roll capacity. You can also shorten your lead times by eliminating drying and curing time for prints. The Océ PowerSync controller process large files quickly eliminating missing information, distortions, and long wait times at the printer.

7 TIME SAVING WORKFLOW

This system is designed to make it easier to prepare, produce, and manage complex files ranging from AEC and CAD all the way to large graphic files. Advanced tools make it easy to get documents when and where you need them.

Increase your efficiency with multiple finishing options

Cut manual finishing out of your workflow. Prints come out dry, cut-to-size, and stacked in the right order. The top delivery tray holds up to 75 prints. Add the Océ Delivery Tray for an extra capacity of up to 150 prints. Seamlessly handle 650 feet of roll-to-roll applications with the Media Take-Up Module. It can feed directly into a cutter or laminator and has an unloading station and tape dispenser built-in. Choose the optional integrated folders to deliver quality folded documents automatically. Two folding options with the Océ Estefold 2400 fanfold and the Océ 4312 Estefold fullfold save you valuable time on hand folding documents.

A fully integrated scanner using Océ Color Image Logic® technology automatically compensates for wrinkled prints, light color, and background noise to produce superior results with no extra time spent changing scan settings.

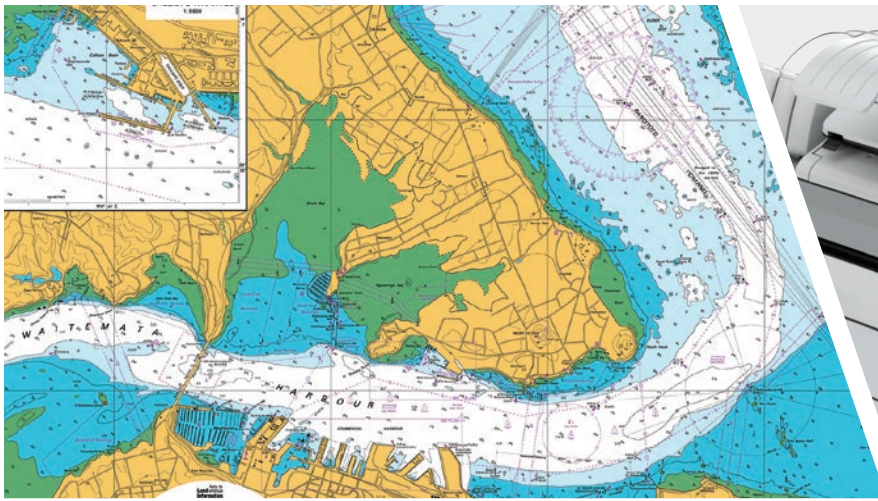
Sustainable and secure investment

When you work in a production environment, you want your systems to be people friendly and planet friendly. The Océ ColorWave 700 printer is designed to create a healthy working environment. The unique Océ TonerPearls® toner ensures that there's no fine dust, no odor, and minimal waste disposal. It can print on recycled and carbon neutral media and has good de-inking properties.

Save time and money by printing your large format jobs in-house with no manual trimming or dry time, cut-to-size output that's ready for shipping or finishing. You can also help increase your profitability by offering a wider range of applications, all printed on the Océ ColorWave 700 printing system.



| PRINT SYSTEM | |
|--------------------------|---|
| Description | Color and Monochrome printer based on Océ CrystalPoint Technology, 42", Dual Memory Controller, 4 rolls (6 roll option), Océ ClearConnect multi-touch user panel, Océ Top Delivery Tray |
| Imaging technology | Océ CrystalPoint Technology. Instant dry, waterfast output on uncoated media |
| Toner/ type | Océ ColorWave 700 TonerPearls toner, Cyan, Magenta, Yellow and Black TonerPearls, 500 gram /color. Clean toner refill, no toner dust, no residue |
| Print modes | OPA (Océ Print assistant, determines the most suitable print mode automatically based on content file) |
| Print speed | Monochrome CAD: 1,389 sq. ft./hour (225 D-size prints/hour) in high speed mode, Color CAD: 1,292 sq. ft./hour (212 D-sized prints/hour) in high speed mode |
| Resolution | True resolution: 600 x 600 dpi |
| Size main engine (WxDxH) | 6.89' x 2.95' x 5.18' (2100 x 900 x 1580 mm) |
| Weight main engine | 594 lb. (290 kg) (printer and 1 drawer) |
| MEDIA HANDLING | |
| Media capacity | 4 or 6 rolls (1 drawer = 2 rolls, 2 drawers = 4 rolls, 3 drawers = 6 rolls). Up to 13,650' of online media capacity |
| Supported rolls | Maximum roll diameter: 7.1" (180 mm) Maximum roll weight: 44 lb. (20 kg) 3" and 2" cores (media on 2" core to the external output not to the TDT) Media untaped on core |
| Media thickness | 800 µm; 32 mil (film: 2.5 – 8 mil) |
| Media tools | Automatic width detection. Océ Media Sense Technology (automatic media thickness measurement and printing height adjustment). |
| Maximum media length | 650' (200 m) |
| Media cutting | Automatic / Manual option |
| Media sizes | All widths between 11"–42" (297 mm–1067 mm), including standard sizes DIN, ANSI, ARCH |
| Media weight | Paper: 16–43 lb. (60–160 g/m ²); film: 2.5–4.5 mil |
| Minimum print length | 8.5" (210 mm) |
| Media type | Uncoated papers, uncoated Tyvek®, self-adhesive papers, self-adhesive coated vinyls, blue back papers, polypropylene films, polyester films, light blocks films, canvas, soft banner, instant dry photo paper, backlit paper, uncoated and coated nonwoven wallpaper (fleece), self-adhesive wallpaper, several natural and synthetic textiles. |
| USER INTERFACE | |
| Description | Océ ClearConnect multi-touch user panel |
| Size (WxDxH) | 11.8" x 8.7" x 1.6" (300 x 220 x 40 mm); Touch screen: 10.4" |
| Resolution | 800 x 600 pixels |
| Number of colors | 16.2 million |
| Technology | Projective capacitive touch |
| Operation | 3 hard buttons: [Wake-up], [Stop, interrupt, abort], [Home] Multi-touch functions: tap, double tap, pinch, 2 finger pinch, swipe, flick, and spread |
| Interface design | IF design award: distinctive user interface with intuitive navigation and clearly defined levels of operation |
| Features | View optimization: Tilt (-4 to +45 degrees) and turn (-45 to +180 degrees) Status light (red, green) USB 2.0 interface with indication light |
| Languages | Switch instantly between 2 languages. Select from 21 languages. |
| CONTROLLER | |
| Description | Océ POWERsync Controller, with Microsoft Windows 8 embedded, 64 bits |
| Processor | i3 processor |
| Memory | 8 GB |



| CONTROLLER (CONTINUED) | |
|---|--|
| Video | Intel HD Graphics, 1GHz |
| Hard disk | 2 x 500 GB |
| Interface | Ethernet 100 Mbits/s, 1 Gbit/s TCP/IP: DHCP, IPv4, IPv6, https Discovery: WSD, LPD, NetBios |
| Page description language | TIFF 6.0, JPEG1.02, HPGL, HPGL2, C4, Calcomp 906/907/951, CALS 1, NIRS, NIFF, PS3/PDF1.7/APPE3 (optional) |
| Security | E-shredding, IPSec, HTTPS, extended security protection for administrator, audit logging. User authentication on local UI for FTP, SMB, and WebDav. Configure HTTPS Certificates, Removable Hard Drives (optional) |
| Access management | Provide secure access to device by users by keying in password on the ClearConnect multi-touch operator panel or get access with a Smart Card by connecting a card reader. Authorization is managed by using Active Directory. |
| Cloud support | Unlimited user and or Administrator authenticated cloud support via WebDav and/or third party provider: e.g. Microsoft Sharepoint®, Dropbox®, Box.com, box.net, Google® Drive®, Microsoft SkyDrive®, Amazon®, Cloudsafe®, MyDisk®, ARC® Collaborate. |
| Color management | <ul style="list-style-type: none"> • RGB input profile (sRGB, AdobeRGB) • CMYK input profile (Euroscale coated, Euroscale uncoated, US Web coated (SWOP), US Web uncoated, ISOcoated_v2_eci_300.icc, ISOcoated_v2_eci.icc (FOGRA39), PSO Uncoated ISO12647-ECI (FOGRA47), GRACoL2006_Coated1v2.icc, SWOP2006_Coated3v2.icc, SWOP2006_Coated5v2.icc, UncoatedFogra29.icm) • Gray profile (standard included in the PDF/APPE option) • Rendering intent (perceptual, saturation, absolute colorimetric, relative colorimetric) |
| Smart inbox | Personal Smart Inboxes for organizing and re-group jobs, reprinting or preview before printing. |
| SCANNER | |
| Description | Contact Image Sensor (CIS) Color scanner with Océ Image Logic technology |
| Scan resolution | 600 x 600 dpi |
| Scan speed | Monochrome: maximum 47.9'/min (14.6 m/min) Color: maximum 15.75'/min (4.8 m/min) |
| Scan formats | TIFF, PDF, PDF/A, JPEG, CALS, multi-page PDF, multi-page PDF/A and multi-page TIFF |
| Scan destination | Local USB flash drive, FTP, SMB, Controller, mobile device via Océ Mobile WebTools, WebDav Cloud, Collaborate |
| Original width | 8.2"-36" (208 mm-914 mm); automatic digital width detection |
| Original length | 8.2"-630" (208 mm-16,000 mm); (file type dependent, longer than 629.92" (16,000 mm) for smaller originals), automatic length detection |
| Original thickness | Maximum 0.03" (0.8 mm); (non-rigid documents) |
| Zoom | 1:1, Scale to media size, Scale to standard format, Custom: 10-1000 % |
| Preset modes | For scanning and copying |
| Size scanner (WxDxH) | 43" x 12" x 5.5" (1097 x 308 x 140 mm) |
| Weight scanner | 55 lb. (25 kg) |
| ENVIRONMENTAL | |
| Sound pressure level | Ready: 36 dB(A), Active: 57 dB(A) |
| Sound power level | Ready: 4.7 B(A), Active: 6.9 B(A) |
| Ozone concentration | 0 |
| Heat emission | Ready: 214 W, Active: 395 W |
| Power requirements | 100-240 V, 50-60 Hz |
| Power consumption | Sleep: 2.5W, Ready: 199 W, Active: 380 W |
| Safety/EMC marks & environmental labels | CE, TÜV GS, CETECOM, c-UL-US, RCM, ENERGY STAR, FEMP, EPEAT? |
| Recyclables | Printer: made of steel and highly recyclable plastics, min 86% of the engine can either be upcycled or recycled. Toner: cartridge packaging reused as maintenance cassette and made of recyclable plastic. Prints: very good deinkability when recycled. |



| HIGHLIGHTS OCÉ WORKFLOW SOFTWARE | |
|----------------------------------|--|
| Job submission | <p>Create, retrieve and/or send jobs from drivers (Océ Wide Format Printer Driver for Microsoft Windows 2, Océ PostScript 3 driver), external locations (SMB, FTP, LPR, WebDav), Océ Express WebTools, Océ Publisher Select, Océ Publisher Mobile, USB flash drive, Cloud services, Océ Direct Print.</p> <p>1-click printing from USB, 1-click printing from last send jobs via Print SmartAccess on Océ ClearConnect user panel. The Smart Inbox on the Océ ClearConnect user panel enables the job preview: swipe between your jobs for print selection and preview. Pan to view the image in detail (zoom).</p> <p>Multiple files and originals are supported. Print multiple times, and sort by page or set. Media saving automatically rotates originals to optimize media usage.</p> <p>Full support of Adobe PostScript 3, Adobe PDF Print Engine (APPE 3) and ONYX® software.</p> |
| Queue management | <p>Spool memory provides a queuing system for print and copy jobs. This enables multiple users to send print and copy jobs at the same time. Customize priority settings for copy and print jobs in the queue.</p> <p>The Job queue overview gives access to job names, owners, and status including required media. Jobs can be paused, deleted, and placed on top of the queue.</p> |
| Print management | <p>View the counter history at preferred time periods, per job or total overview.</p> <p>View, create, edit, and delete stamp templates.</p> |
| Device management | <p>Océ Express WebTools provide administrators the tools to manage the device remotely via the web: for example, define default settings for print, copy and scan, define access, security, accounting, power on/off timer, system behavior etc. It also provides live system feedback via the web, very useful for the help desk.</p> |
| Scan to file | <p>Océ Scanner Express offers full hybrid performance with its scan-to-file functionality. Send files, via SMB, FTP, WebDAV, to various locations such as local drives, personal Smart Inboxes, or the cloud application of your choice.</p> <p>Scan to USB or use Océ Mobile WebTools and Océ Publisher Mobile to scan to mobile devices.</p> <p>Custom scan file naming to any location. Checkplot functionality.</p> <p>Océ ClearConnect supports Live Preview of the scanning process on the user panel.</p> <p>Scan to many formats including Adobe PDF.</p> |
| Océ ClearConnect | <p>Océ ClearConnect enables a consistent view on your workflow from every possible angle, and job management is made easy. Default jobs can be performed by clicking the green button (Océ SmartAccess for Print, Scan and Copy). Behavior is customizable via Océ Express WebTools. Edit the most common used job settings for copy, scan, and print jobs. Presets can be defined in Océ Express WebTools.</p> <p>The Smart Inbox supports multi-user environments and 1-click printing via the Océ SmartAccess for all users.</p> <p>The Océ Express WebTools controller application supports customizable workflows. Separate work spaces give you a complete overview and full control over print and scan job management. Tasks you can manage are: Settings and configuration management, Network connectivity management, Queue management, License management, System monitoring, Scan retrieval, Print job submission. You can access the integrated Océ Express WebTools controller application from any networked workstation.</p> <p>Job view to check the printer status, available wherever you are with a single click.</p> <p>Use the Smart Inbox to view all jobs with status, job name, and owner. Actions to print, print all, edit, send to..., delete, and save. Custom sorting of jobs in list or group view.</p> <p>What you see is what you print with WPD 2.</p> <p>Open API for third party or own-developed applications integrated with the Océ ClearConnect user panel.</p> <p>Configurable accounting.</p> |
| Mobile and Cloud | <p>Print from and scan to the cloud application of your choice. With the help of mobile applications such as Océ Mobile WebTools and Océ Publisher Mobile the printer can be easily accessed and used from any location.</p> |



| OCÉ WORKFLOW SOFTWARE | |
|--|--|
| Description | Concurrent print, copy, and scan of single documents or sets. |
| Printer drivers | Océ Wide Format Printer Driver for Microsoft Windows 2, Océ PostScript 3 driver |
| Job submission | USB flash drive, Océ Mobile WebTools for iOS, Android and BlackBerry, Océ Publisher Mobile for IOS and Android, Océ Publisher Express, Océ Direct Print, and Océ Publisher Select software. |
| Job management | Personalized Smart Inbox with history, Manage queue, Manage history, Océ Express WebTools, Secured controller access |
| Accounting | Option: Océ Account Center |
| Device management | Remote device management and with Océ Express WebTools: secured controller access, remote shutdown and restart, define default setting, define system behavior. |
| GENERAL | |
| Media capacity upgrade (optional) | Additional 2 roll media drawer |
| Stacking systems (standard) | Integrated Top Delivery Tray, 75 sheets capacity. |
| Océ ClearConnect multi-touch user interface (standard) | Consistent look and feel from every angle of your workflow, standard including Océ Smart Inbox and Océ SmartAccess and Océ Live Preview. |
| Productive scanning system (optional) | Océ Scanner Express with Océ Image Logic® technology. |
| Workflow software (standard) | Océ Wide format Printer Driver for Microsoft Windows 2, Océ PostScript® 3 driver, Océ Mobile WebTools for iOS®, Android® and BlackBerry®, Océ Publisher Mobile for IOS and Android, Océ Publisher Express®, Océ Publisher Select |
| Adobe workflow (optional) | Adobe PostScript 3/PDF/APPE file interpreter |
| Folding systems (optional) | Océ 2400 FanFold Océ 4300 FullFold series |
| Stacking Systems (optional) | Océ Delivery Tray, 150 sheets capacity. Increase delivery capacity up to 225 pages. |
| Workflow software (optional) | Océ View Station, Adobe PostScript 3/PDF/APPE file interpreter, Océ Account Center, Océ Remote Service. |

WHY CANON SOLUTIONS AMERICA.

Canon Solutions America recommends forward-thinking strategies to achieve the highest levels of information management efficiency for your unique business needs. Using superior technology and innovative services, we then design, implement, and track solutions that improve information flow throughout your organization in environmentally conscious ways, resulting in greater productivity and reduced costs.

There are many reasons why you should choose Canon Solutions America as your provider for document management solutions. Benefits include:

- A Canon U.S.A. Company
- Business Services
- Professional Services
- Global Capabilities
- Certified Training and Support
- Flexible Finance Options
- Single-Source Solutions Provider
- Managed Document Services
- Nationwide Coverage
- Customized Industry Solutions
- Genuine Canon and Océ Parts and Supplies
- Diverse Range of Input-to-Output Technology

But that's not all. As a company that is dedicated to your needs, we support our solutions with highly skilled professionals and advanced diagnostic systems to maintain peak performance. And with ongoing consultation, we can further your document management capabilities to ensure the highest level of satisfaction and productivity.



CANON SOLUTIONS AMERICA

LARGE FORMAT SOLUTIONS
100 PARK BLVD., ITASCA, IL 60143

1-800-714-4427 | 1-630-250-6550
us.info@csa.canon.com **CSA.CANON.COM**

Canon is a registered trademark of Canon Inc. in the United States and elsewhere. "Océ" is a trademark or registered trademark of Océ-Technologies B.V. in the United States and elsewhere. Océ ColorWave, Océ CrystalPoint, Océ TonerPearls, and Océ Color Image Logic are registered trademarks of Océ-Technologies B.V. in the United States and elsewhere. Océ Publisher Select is a trademark of Océ-Technologies B.V. in the United States and elsewhere. ONYX is a registered trademark of ONYX Graphics, Inc. in the United States and elsewhere. ONYX Thrive is a trademark of ONYX Graphics, Inc. in the United States and elsewhere. All other referenced product names and marks are trademarks of their respective owners and are hereby acknowledged. The absence of product or service mark names and logos anywhere in the text does not constitute a waiver of any trademark or other intellectual property rights pertaining to that name, mark or logo.

© 2015 Canon Solutions America, Inc. All rights reserved.

LFS-51330 DS 3/15 CC1/PDF